

CHRISKO
T H A I L A N D

Edition 8

NEW ITEMS

003

BARWARE
& DRINKWARE

011

BUFFETWARE
& DISPLAYS

029

DINNERWARE

038

FURNITURES

043

HEALTHCARE

048

**KITCHENWARE
& UTENSILS**

055

SERVICWARE

072

**TABLE
PRESENTATION**

088

ALPHA-NUMERIC INDEX

095



NEW ITEMS 2022

PREMIUM CONDIMENT HOLDER



| <u>Item no.</u> | <u>Description</u> | <u>Packing</u> |
|-----------------|---------------------------------------|----------------|
| PBCP-6-BLK | with 6 one quart inserts | 6 pcs/4.01' |
| PBCP-5-BLK/WH | with 4 one quart inserts, 1 two quart | 6 pcs/4.01' |
| PBCP-3-BK/WH | with 3 two quart inserts | 6 pcs/4.01' |
| PBCS-6--BK | with 6 one quart inserts, straw hold | 6 pcs/4.54' |
| PBCS-3-BK | with 3 two quart inserts, straw hold | 6 pcs/4.54' |
| PBCP-1I | one quart insert | 24 pcs/0.47' |
| PBCP-2I | two quart insert | 24 pcs/0.91' |

PREMIUM BAR CADDY

- Two parts design



Item no.

PBC-6-BK/WH
PBC-6-CH/GD

Color

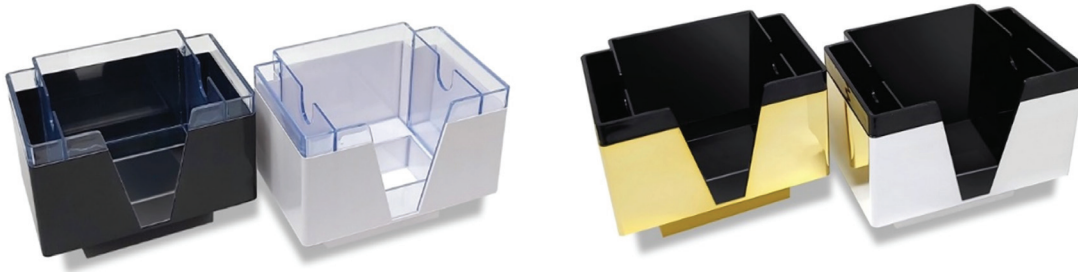
black/ white
chrome/ gold

Packing

12 pcs/1.92'
12 pcs/1.92'

PREMIUM BAR CADDY

- Two parts design, square



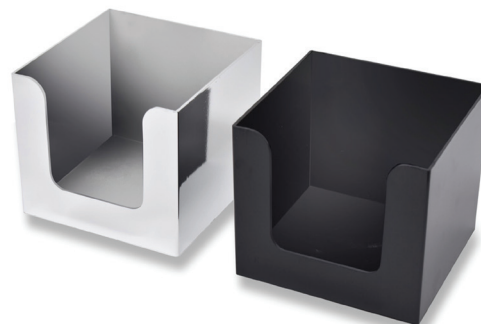
| <u>Item no.</u> | <u>Color</u> | <u>Packing</u> |
|-----------------|--------------|----------------|
| PBC-3-BK | black | 12 pcs/1.80' |
| PBC-3-WH | white | 12 pcs/1.80' |
| PBC-3-CH | chrome | 12 pcs/1.80' |
| PBC-3-GD | gold | 12 pcs/1.80' |

NAPKIN HOLDER



- Triangular shape

| <u>Item no.</u> | <u>Color</u> | <u>Packing</u> |
|-----------------|--------------|----------------|
| BC-4-BK | black | 12 pcs/2.07' |



- Square shape

| <u>Item no.</u> | <u>Color</u> | <u>Packing</u> |
|-----------------|--------------|----------------|
| BC-1-BK | black | 11 pcs/0.97' |
| BC-1-CH | chrome | 12 pcs/0.97' |

INTERLOCKING BAR STRIP

- Dimention: 1/2" x 12" (9 x 31 CM)



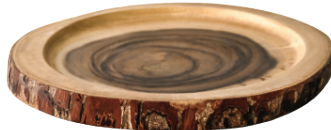
| <u>Item no.</u> | <u>Packing</u> |
|-----------------|----------------|
| IBS-12 | 13 pcs/0.38' |

PREMIUM PIZZA BAG



| <u>Item no.</u> | <u>Size</u> | <u>Packing</u> |
|-----------------|--------------------------------------|----------------|
| PPZB-166 | 16" x 16" x 6" h (40 x 40 x 15h cm) | 8 pcs/4.07' |
| PPZB-1610 | 16" x 16" x 10" h (40 x 40 x 25h cm) | 8 pcs/4.07' |
| PPZB-186 | 8" x 18" x 6" h (45 x 45 x 15h cm) | 8 pcs/4.07' |
| PPZB-1810 | 18" x 18" x 10" h (45 x 45 x 25h cm) | 8 pcs/4.07' |

THICK ROUND WOOD BOARD WITH BARK



| <u>Item no.</u> | <u>Size</u> | <u>Packing</u> |
|-----------------|--------------------|----------------|
| CBW-SLT9 | 9" Diam. X 22 mm. | 6 pcs/0.49' |
| CBW-SLT13 | 13" Diam. X 22 mm. | 6 pcs/0.89' |

WOOD PLATE



| <u>Item no.</u> | <u>Size</u> | <u>Packing</u> |
|-----------------|-------------|----------------|
| WPLT-07 | 7.75" Diam. | 6 pcs/0.27' |
| WPLT-09 | 9.75" Diam. | 6 pcs/0.43' |
| WPLT-12 | 12" Diam. | 6 pcs/0.63' |

MELAMINE ROUND PLATE

- Matte Finish



| <u>Item no.</u> | <u>Size</u> | <u>Packing</u> |
|-----------------|---------------|----------------|
| MPR-65 | 6.5" (16.5cm) | 6 pcs/0.27' |
| MPR-8 | 8" (20cm) | 6 pcs/0.43' |
| MPR-10 | 10" (25.5cm) | 6 pcs/0.63' |

MELAMINE ROUND BOWL

- Matte Finish



| <u>Item no.</u> | <u>Size</u> | <u>Packing</u> |
|-----------------|-------------|----------------|
| MBR-4 | 4" (10cm) | 12 pcs/0.21' |
| MBR-5 | 5" (13cm) | 12 pcs/0.26' |
| MBR-7 | 7" (18cm) | 12 pcs/0.77' |
| MBR-8 | 8" (20cm) | 6 pcs/0.43' |

A hand is pouring a vibrant red liquid from a clear glass pitcher into a clear glass. The scene is set on a dark, rustic wooden bar counter. In the background, several other glasses are lined up on a shelf, including some with a metallic finish and others with a textured or patterned design. The lighting is dramatic, highlighting the liquid and the glassware against a dark background.

BARWARE & DRINKWARE

MULTI-POUR

- Made of hi-density polyethylene
- Oval shape neck for easy grip
- BPA free
- Available in 7 colors



Complete Set

1 pint (500 ml)
packing: 12/1.20'

Item no.

QMP-18BW
QMP-18CL
QMP-18CW
QMP-18GN
QMP-18RD
QMP-18OG
QMP-18WT
QMP-18YL

1 quart (1000 ml)
packing: 12/0.90'

Item no.

QMP-36BW
QMP-36CL
QMP-36CW
QMP-36GN
QMP-36RD
QMP-36OG
QMP-36WT
QMP-36YL

½ gallon (2000 ml)
packing: 12/1.54'

Item no.

QMP-72BW
QMP-72CL
QMP-72CW
QMP-72GN
QMP-72RD
QMP-72OG
QMP-72WT
QMP-72YL

Spout Color

brown
clear
clear
green
red
orange
white
yellow

Lid Color

brown
frost
white
green
red
orange
white
yellow

MULTI-POUR REPLACEMENTS

containers

- PE plastic



| <u>Item no.</u> | <u>Capacity</u> | <u>Packing</u> |
|-----------------|-----------------|----------------|
| QMP-18 | 500 ml | 1/24/0.83' |
| QMP-36 | 1000 ml | 1/24/1.45' |
| QMP-72 | 2000 ml | 1/24/3.15' |

lids

- PP plastic



| <u>Item no.</u> | <u>Color</u> | <u>Packing</u> |
|-----------------|--------------|----------------|
| QMP-LBW | brown | 72/144/0.97' |
| QMP-LCL | frost | 72/144/0.97' |
| QMP-LGN | green | 72/144/0.97' |
| QMP-LRD | red | 72/144/0.97' |
| QMP-LOG | orange | 72/144/0.97' |
| QMP-LWT | white | 72/144/0.97' |
| QMP-LYL | yellow | 72/144/0.97' |

neck

- PP plastic



| <u>Item no.</u> | <u>Packing</u> |
|-----------------|----------------|
| QMP-NH | 6/72/1.23' |

measuring cap

- SAN plastic



| <u>Item no.</u> | <u>Packing</u> |
|-----------------|----------------|
| QMP-MP | 72/144/0.50' |

SAVE N' SERVE

complete set

- 1 assorted colored EVA plastic spouts: blue (BL), green (GN), red (RD), orange (OG), white (WT) and yellow (YL)
- Neck, container and lid included



| <u>Item no.</u> | <u>Capacity</u> | <u>Packing</u> |
|-----------------|-------------------|----------------|
| GMP-618 | 1 pint/ 500 ml | --/12/1.20' |
| GMP-636 | 1 quart/ 1000 ml | --/12/0.90' |
| GMP-672 | ½ gallon/ 2000 ml | --/12/1.54' |

SAVE N' SERVE

complete set- with 6 color spouts

- 6 assorted colored EVA plastic spouts (blue, green, red, orange, white and yellow)
- Neck, container and lid included



| <u>Item no.</u> | <u>Capacity</u> | <u>Packing</u> |
|-----------------|-------------------|----------------|
| GMP-618S | 1 pint/ 500 ml | --/12/1.20' |
| GMP-636S | 1 quart/ 1000 ml | --/12/1.40' |
| GMP-672S | ½ gallon/ 2000 ml | --/12/1.70' |

COLOR SPOUTS FOR MULTI-POUR

- SAN plastic



| <u>Item no.</u> | <u>Color</u> | <u>Packing</u> |
|-----------------|--------------|----------------|
| QMP-SBW | brown | --/144/0.74' |
| QMP-SCL | clear | --/144/0.74' |
| QMP-SGN | green | --/144/0.74' |
| QMP-SRD | red | --/144/0.74' |
| QMP-SOG | orange | --/144/0.74' |
| QMP-SWT | white | --/144/0.74' |
| QMP-SYL | yellow | --/144/0.74' |

FREE FLOW POURERS FOR MULTI-POUR

- EVA plastic



| <u>Item no.</u> | <u>Color</u> | <u>Packing</u> |
|-----------------|--------------|----------------|
| PRP-03BL | blue | --/864/2.21' |
| PRP-03GN | green | --/864/2.21' |
| PRP-03OG | orange | --/864/2.21' |
| PRP-03RD | red | --/864/2.21' |
| PRP-03WT | white | --/864/2.21' |
| PRP-03YL | yellow | --/864/2.21' |

FLEXIBLE FREE POURERS

- EVA plastic



| <u>Item no.</u> | <u>Color</u> | <u>Packing</u> |
|-----------------|--------------|----------------|
| PRP-01BK | black | --/120/0.84' |
| PRP-01BL | blue | --/120/0.84' |
| PRP-01CL | clear | --/120/0.84' |
| PRP-01GN | green | --/120/0.84' |
| PRP-01RD | red | --/120/0.84' |
| PRP-01WT | white | --/120/0.84' |
| PRP-01YL | yellow | --/120/0.84' |

ECONOMICAL FREE FLOW POURERS

- EVA durable pourers



| <u>Item no.</u> | <u>Color</u> | <u>Packing</u> |
|-----------------|--------------|----------------|
| PRP-02BK | black | --/864/2.21' |
| PRP-02BL | blue | --/864/2.21' |
| PRP-02CL | clear | --/864/2.21' |
| PRP-02GN | green | --/864/2.21' |
| PRP-02RD | red | --/864/2.21' |
| PRP-02WT | white | --/864/2.21' |
| PRP-02YL | yellow | --/864/2.21' |

DELUXE FREE FLOW POURERS



| <u>Item no.</u> | <u>Spout</u> | <u>Collar</u> | <u>Packing</u> |
|-----------------|--------------|---------------|----------------|
| PFF-02CL | clear | black | --/288/1.12' |
| PFF-02GN | green | green | --/288/1.12' |
| PFF-02RD | red | red | --/288/1.12' |
| PFF-02YL | yellow | yellow | --/288/1.12' |

WHISKEY POURERS - NO COLLAR



| <u>Item no.</u> | <u>Spout</u> | <u>Packing</u> |
|-----------------|--------------|----------------|
| PWP-02BK | black | --/576/1.71' |
| PWP-02CL | clear | --/576/1.71' |
| PWP-02OG | orange | --/576/1.71' |
| PWP-02RD | red | --/576/1.71' |

POUR & SEAL LIQUOR POURERS

- EVA plastic
- Works on both screw cap and corked wine bottles



| <u>Item no.</u> | <u>Color</u> | <u>Packing</u> |
|-----------------|--------------|----------------|
| PRP-04BK | black | --/576/0.80' |
| PRP-04BL | blue | --/576/0.80' |
| PRP-04CL | clear | --/576/0.80' |
| PRP-04GN | green | --/576/0.80' |
| PRP-04RD | red | --/576/0.80' |
| PRP-04WT | white | --/576/0.80' |
| PRP-04YL | yellow | --/576/0.80' |

POUR & SEAL LIQUOR POURERS



| <u>Item no.</u> | <u>Spout</u> | <u>Collar</u> | <u>Packing</u> |
|-----------------|--------------|---------------|----------------|
| PWPC-02BK | black | black | --/576/1.71' |
| PWPC-02BL | blue | blue | --/576/1.71' |
| PWPC-02CB | clear | black | --/576/1.71' |
| PWPC-02RB | red | black | --/576/1.71' |
| PWPC-02RD | red | red | --/576/1.71' |

UNIVERSAL POURER DUST CAP



| <u>Item no.</u> | <u>Color</u> | <u>Packing</u> |
|-----------------|--------------|----------------|
| PC-01BK | black | --/144/0.50' |
| PC-01SK | smoke | --/144/0.50' |

BAR CADDY

- High impact PS plastic



| <u>Item no.</u> | <u>Color</u> | <u>Packing</u> |
|-----------------|--------------|----------------|
| BCP-01BK | black | 1/12/1.77' |

GLASS RIMMERS

- High impact plastic, black color
- Swing-out trays, with one piece sponge

| <u>Item no.</u> | <u>Description</u> | <u>Packing</u> |
|-----------------|--------------------|----------------|
| GRP-2 | 2 trays | 1/12/1.85' |
| GRP-3 | 3 trays | 1/12/1.09' |
| GRP-3RS | replacement sponge | 12/120/0.57' |



CONDIMENT HOLDERS

- Caddy- ABS plastic, black color
- Lid- clear PC plastic
- Insert- PE plastic, white color



| <u>Item no.</u> | <u>Compartment</u> | <u>Packing</u> |
|-----------------|--------------------------|----------------|
| BCP-06BK | 1 pint (6 pcs)/ 500 ml | 1/6/2.36' |
| BCP-04BK | 1½ pint (4 pcs)/ 700 ml | 1/6/2.36' |
| BCP-03BK | 1 quart (3 pcs)/ 1000 ml | 1/6/2.36' |

| <u>Item no.</u> | <u>Description</u> | <u>Packing</u> |
|-----------------|--------------------|----------------|
| BCP-06H | 1 pint insert | --/48/0.56' |
| BCP-04H | 1½ pint insert | --/48/0.80' |
| BCP-03H | 1 quart insert | --/48/1.01' |

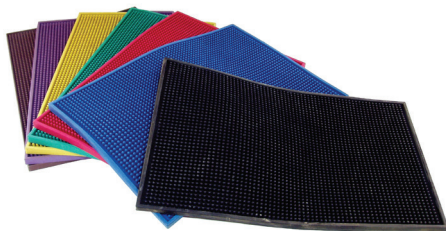
BAR CENTER



| <u>Item no.</u> | <u>Color</u> | <u>Packing</u> |
|-----------------|--------------|----------------|
| BCP-02BK | black | 1/6/2.50' |

BAR SERVICE MATS

- Flexible thermoplastic rubber

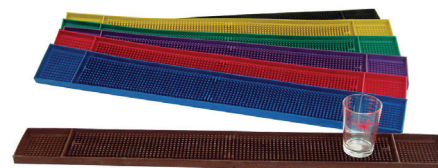


- size: 12" x 18" x 1/2" (30 x 46 x 1.50 cm)

| <u>Item no.</u> | <u>Color</u> | <u>Packing</u> |
|-----------------|--------------|----------------|
| BM-1218BK | black | 12/24/2.09' |
| BM-1218BL | blue | 12/24/2.09' |
| BM-1218BN | brown | 12/24/2.09' |
| BM-1218GN | green | 12/24/2.09' |
| BM-1218PL | purple | 12/24/2.09' |
| BM-1218RD | red | 12/24/2.09' |
| BM-1218YL | yellow | 12/24/2.09' |

BAR RAIL MATS

- Flexible thermoplastic rubber



size: 24" x 3 1/4" (60 x 8 cm)

| <u>Item no.</u> | <u>Color</u> | <u>Packing</u> |
|-----------------|--------------|----------------|
| BM-743BK | black | 12/48/2.02' |
| BM-743BL | blue | 12/48/2.02' |
| BM-743BN | brown | 12/48/2.02' |
| BM-743GN | green | 12/48/2.02' |
| BM-743PL | purple | 12/48/2.02' |
| BM-743RD | red | 12/48/2.02' |
| BM-743YL | yellow | 12/48/2.02' |

size: 26 1/2" x 3 1/4" (68 x 8 cm)

| <u>Item no.</u> | <u>Color</u> | <u>Packing</u> |
|-----------------|--------------|----------------|
| BM-753BK | black | 12/48/2.55' |
| BM-753BL | blue | 12/48/2.55' |
| BM-753BN | brown | 12/48/2.55' |
| BM-753GN | green | 12/48/2.55' |
| BM-753PL | purple | 12/48/2.55' |
| BM-753RD | red | 12/48/2.55' |
| BM-753YL | yellow | 12/48/2.55' |

WOOD MUDDLERS

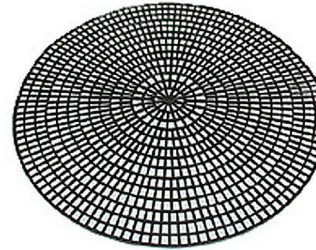
- Available in 3 finishes: Dark walnut (DW), Mahogany (MG), Natural (NA)



| <u>Item no.</u> | <u>Length</u> | <u>Packing</u> |
|-----------------|---------------|----------------|
| WMD-08 | 8" (20 cm) | 24/144/1.13' |
| WMD-10 | 10" (25.5 cm) | 24/144/2.06' |
| WMD-12 | 12" (30 cm) | 24/144/2.37' |

NON-SKID TRAY MATS

- Black synthetic rubber

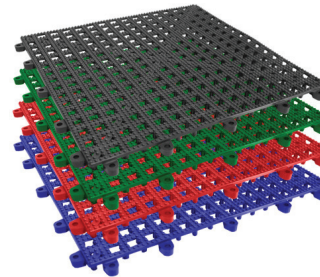


| <u>Item no.</u> | <u>Size</u> | <u>Packing</u> |
|-----------------|---------------|----------------|
| NSM-11 | 11" (28 cm) | --/72/0.85' |
| NSM-14 | 14" (36 cm) | --/72/1.35' |
| NSM-16 | 16" (40.5 cm) | --/72/1.90' |

INTERLOCKING SHELF MATS

- PE plastic
- Size: 13" x 13" (33 x 33 cm)

| <u>Item no.</u> | <u>Color</u> | <u>Packing</u> |
|-----------------|--------------|----------------|
| ISM-13BK | black | --/12/0.55' |
| ISM-13BL | blue | --/12/0.55' |
| ISM-13CL | clear | --/12/0.55' |
| ISM-13GN | green | --/12/0.55' |
| ISM-13RD | red | --/12/0.55' |
| ISM-13WT | white | --/12/0.55' |



NYLON PLASTIC MUDDLER, MATTE BLACK FINISH

- Durable nylon 66 solid one piece construction
- Duo changeable heads in one set: gridded and flat



| <u>Item no.</u> | <u>Length</u> | <u>Packing</u> |
|-----------------|---------------|----------------|
| NMD-BK | 10" (25.5 cm) | --/120/1.08' |

DRAIN OVERFLOW PIPES



| <u>Item no.</u> | <u>Length</u> | <u>Packing</u> |
|-----------------|---------------|----------------|
| OPP-18 | 7" (18 cm) | 12/300/2.12' |
| OPP-20 | 8" (20 cm) | 12/288/2.80' |
| OPP-28 | 11" (28 cm) | 12/144/1.64' |

WATER PITCHERS

- SAN plastic
- Chipping and scratching resistant
- 3-spout design
- Available in 6 colors: amber (AM), black (BK), clear (CL), red (RD), smoke (SK), white (WT)



| <u>Item no.</u> | <u>Capacity</u> | <u>Packing</u> |
|-----------------|-----------------|----------------|
| PWS-32 | 32 oz (960 ml) | --/12/0.99' |
| PWS-60 | 60 oz (1.8 ltr) | --/12/2.08' |

PEBBLED TUMBLERS

- SAN plastic
- Chipping and scratching resistant
- Available in 3 colors: amber (AM), clear (CL), red (RD)

| <u>Item no.</u> | <u>Capacity</u> | <u>Packing</u> |
|-----------------|-----------------|----------------|
| PTP-05 | 5 oz (150 ml) | --/72/0.48' |
| PTP-08 | 8 oz (240 ml) | --/72/0.71' |
| PTP-09 | 9 oz (270 ml) | --/72/0.79' |
| PTP-12 | 12 oz (360 ml) | --/72/1.06' |
| PTP-16 | 16 oz (480 ml) | --/72/1.27' |
| PTP-20 | 20 oz (600 ml) | --/72/0.94' |



FLUTED TUMBLERS

- SAN plastic
- Chipping and scratching resistant

| <u>Item no.</u> | <u>Capacity</u> | <u>Packing</u> |
|-----------------|-----------------|----------------|
| FTP-05 | 5 oz (150 ml) | --/72/0.51' |
| FTP-08 | 8 oz (240 ml) | --/72/0.67' |
| FTP-10 | 10 oz (270 ml) | --/72/0.91' |
| FTP-12 | 12 oz (360 ml) | --/72/1.09' |



8 OZ. FLUTED TUMBLERS

- Capacity: 8 oz. (240 ml)
- Chipping and scratching resistant

PP plastic



| <u>Item no.</u> | <u>Color</u> | <u>Packing</u> |
|-----------------|--------------|----------------|
| 98402 | clear | --/72/0.67' |
| 98574 | blue | --/72/0.67' |
| 98572 | burgundy | --/72/0.67' |
| 98576 | green | --/72/0.67' |

SAN plastic



| <u>Item no.</u> | <u>Color</u> | <u>Packing</u> |
|-----------------|--------------|----------------|
| 98552 | blue | --/72/0.67' |
| 98554 | burgundy | --/72/0.67' |
| 98556 | green | --/72/0.67' |

SILICONE COASTERS

- Odor free
- Safe for temperature up to 400 °F (216 °C)
- Available in 7 colors: black (BK), blue (B), green (LG), orange (OG), purple (P), red (R), yellow (Y)



| <u>Item no.</u> | <u>Diameter</u> | <u>Packing</u> |
|-----------------|-----------------|----------------|
| 16 | 4" (10 cm) | 48/144/0.52' |

RUBBER COASTERS

- Odor free
- Available in 6 colors: blue (B), green (LG), orange (OG), purple (P), red (R), yellow (Y)



| <u>Item no.</u> | <u>Diameter</u> | <u>Packing</u> |
|-----------------|-----------------|----------------|
| 14 | 3¾ (9.4 cm) | 48/144/0.51' |

DRIP TRAYS

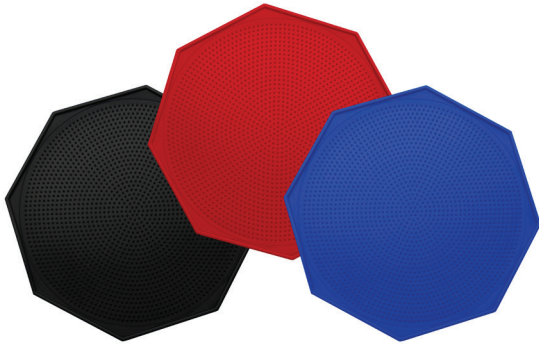
- Flexible themoplastic rubber



| <u>Item no.</u> | <u>Shape</u> | <u>Size</u> | <u>Packing</u> |
|-----------------|--------------|--------------|----------------|
| BC-01 | round | 6 ¼" (16 cm) | 12/48/1.60' |
| BC-04 | square | 4 ½" (12 cm) | 12/48/1.44' |
| BC-06 | square | 6" (15 cm) | 12/48/1.60' |

SILICONE HOT PADS

- Safe for temperature up to 400 °f (216 °c)
- Available in 3 colors: black (BK), blue (BL), red (RD)



| <u>Item no.</u> | <u>Size</u> | <u>Packing</u> |
|-----------------|--------------|----------------|
| TC-01 | 6 ¾" (17 cm) | 24/72/0.62' |

TAMPER HOLDER

- Black rubber



| <u>Item no.</u> | <u>Diameter</u> | <u>Packing</u> |
|-----------------|--|----------------|
| CTH-35 | outer: 3 ½" (8.8 cm) inner: 2 ½" (6.5 cm) | 12/48/1.94' |

WOODEN COASTERS

- Marbled color



| <u>Item no.</u> | <u>Shape</u> | <u>Size</u> | <u>Packing</u> |
|-----------------|--------------|----------------------|----------------|
| SC-M | square | 4" x 4" (10 x 10 cm) | --/30/0.77' |
| RC-M | round | 4.5" (11.5 cm) | --/30/0.92' |

WOODEN MUDDLER, GRIDDED TIP

- Length: 10"



| <u>Item no.</u> | <u>Color</u> | <u>Packing</u> |
|-----------------|--------------|----------------|
| WMDM-10BK | black | ---/100/0.86' |
| WMDM-10M | marbled | ---/100/0.86' |

BUFFETWARE & DISPLAYS



FAUX SLATE DISPLAY STAND



Melamine slate platters

- Available in 2 colors:
black (BK), white (WT)

| <u>Item no.</u> | <u>Size</u> | <u>Packing</u> |
|-----------------|----------------------------|----------------|
| MSP-14 | 8" x 14" (20 x 35.50 cm) | 12/36/1.40' |
| MSP-18 | 8 ½" x 18" (21.50 x 46 cm) | 12/24/1.20' |
| MSP-21 | 13" x 21" (33 x 54 cm) | --/12/1.20' |



Knock-down stand, steel tube

- Available in 2 colors:
black (BK), white (WT)

| <u>Item no.</u> | <u>Description</u> | <u>Size</u> | <u>Packing</u> |
|-----------------|--------------------|-------------------------------------|----------------|
| BU-02 | 2-tier stand | 13" x 12½" x 8" (33 x 32 x 20 cm) | --/24/4.36' |
| BU-03 | 3-tier stand | 20½" x 12½" x 12" (52 x 32 x 30 cm) | --/12/4.36' |



PREMIUM ACRYLIC PASTRY DISPLAY

- Durable acrylic construction with knob
- Excellent product visibility
- Back loading door
- Trays sold separately

| <u>Item no.</u> | <u>Size</u> | <u>Packing</u> |
|-----------------|-------------------------------------|----------------|
| APD-816S | 14.5" x 12" x 14" (37 x 30 x 35 cm) | 1/2/ 3.6' |
| APD-818 | 13" x 18.5" x 14" (33 x 47 x 35 cm) | --/1/ 2.2' |
| APD-1321 | 17" x 22" x 14" (43 x 55 x 35 cm) | --/1/ 3.4' |



CAKE COVER

- Made of one-piece clear acrylic



| <u>Item no.</u> | <u>Diameter</u> | <u>Packing</u> |
|-----------------|-----------------|----------------|
| CCP-12A | 12" (30 cm) | --/12/2.37' |

SWIVEL CAKE STANDS



| <u>Item no.</u> | <u>Size</u> | <u>Packing</u> |
|-----------------|---------------------------|----------------|
| WCS-414 | 13" x 5"H (33 x 12.5 cm) | --/4/2.98' |
| WCS-414A | 13" x 1 1/2"H (33 x 4 cm) | --/4/1.07' |

RISER SETS

- 3 pcs in one set
- Height: 5", 7" and 9" (12.50, 18, 23 cm)

| <u>Item no.</u> | <u>Color</u> | <u>Packing</u> |
|-----------------|--------------|-------------------|
| WB-579BK | black | 1 set/2 set/1.29' |
| WB-579M | mahogany | 1 set/2 set/1.29' |



LAZY SUSAN

- 2 cm thickness, 1 ¾" high



| <u>Item no.</u> | <u>Size</u> | <u>Packing</u> |
|-----------------|----------------|----------------|
| WLS-12 | 12" (30 cm) | --/4/1.07' |
| WLS-14 | 14" (35.50 cm) | --/4/1.29' |
| WLS-16 | 16" (40.50 cm) | --/4/1.72' |

BREAD BOARD

- Thickness: 2 cm



| <u>Item no.</u> | <u>Size</u> | <u>Packing</u> |
|-----------------|--------------------------|----------------|
| WBB-01 | 15" x 10 ¼" (38 x 26 cm) | --/12/1.10' |

ROUND LEMON BOARD

- With groove to catch juice

| <u>Item no.</u> | <u>Size</u> | <u>Packing</u> |
|-----------------|---------------------|----------------|
| WCBR-7 | 7" x ½" (18 x 1 cm) | --/12/0.28' |



FRUIT BOARD



| <u>Item no.</u> | <u>Size</u> | <u>Packing</u> |
|-----------------|------------------------------------|----------------|
| WCBF-69 | 6" x 9" x 1" (15 x 23 x 2.5 cm) | --/12/0.55' |

CHEESE BOARD



| <u>Item no.</u> | <u>Size</u> | <u>Packing</u> |
|-----------------|---|----------------|
| WCBC-115 | 11 1/2" x 5 1/2" x 1/2" (29 x 14 x 1 cm) | --/24/0.72' |

HAM BOARD

- 3 pcs in one set
- Size: 5", 7" and 9" (12.50, 18, 23 cm)



| <u>Item no.</u> | <u>Slot</u> | <u>Size</u> | <u>Packing</u> |
|-----------------|-------------|--|----------------|
| WCBP-137 | no | 13 3/4" x 7" x 1/2" (35 x 18 x 1 cm) | --/12/0.53' |
| WCBP-137S | yes | 13 3/4" x 7" x 1/2" (35 x 18 x 1 cm) | --/12/0.53' |
| WBB-KS | yes | 12 1/2" x 5 1/2" x 3/4" (32 x 14 x 2 cm) | --/24/0.89' |

WOOD BOARDS



| <u>Item no.</u> | <u>Size</u> | <u>Packing</u> |
|-----------------|---------------------------|----------------|
| WCB-812 | 12" x 8" (30.8 x 20.5 cm) | --/12/0.74' |
| WCB-816 | 16" x 8" (40.6 x 20.5 cm) | --/12/0.96' |

ROUND PIZZA PEELS WITH GROOVES



| <u>Item no.</u> | <u>O.A.</u> | <u>Size</u> | <u>Packing</u> |
|-----------------|-----------------|-------------|----------------|
| WPA-1105 | 15 3/4" (40 cm) | 11" (28 cm) | --/12/0.60' |
| WPA-1205 | 17" (43 cm) | 12" (30 cm) | --/12/0.70' |
| WPA-1505 | 20" (50 cm) | 15" (38 cm) | --/12/0.85' |

OVAL CHEESE BOARD

| <u>Item no.</u> | <u>Size</u> | <u>Packing</u> |
|-----------------|---------------------------|----------------|
| CBW-1218 | 12" x 18" (30 x 46 cm) | --/6/0.70' |



RECTANGULAR SERVING BOARD



| <u>Item no.</u> | <u>Size</u> | <u>Packing</u> |
|-----------------|--------------------------|----------------|
| CBW-188 | 18" x 8" (46 x 20 cm) | --/6/0.60' |

RECTANGULAR SERVING BOARD WITH LEATHER HANDLE



| <u>Item no.</u> | <u>Size</u> | <u>Packing</u> |
|-----------------|----------------------------|----------------|
| CBW-1910 | 18" x 9" (46 x 2.86 cm) | --/6/0.72' |

ARROW SERVING BOARD



| <u>Item no.</u> | <u>Size</u> | <u>Packing</u> |
|-----------------|--------------------------|----------------|
| CBW-189 | 18" x 9" (46 x 23 cm) | --/6/0.60' |

RUSTIC SUSAN



| <u>Item no.</u> | <u>Size</u> | <u>Packing</u> |
|-----------------|----------------|----------------|
| CBW-14 | 14" (35.50 cm) | --/6/1.20' |

RUSTIC BARK BOWL



| <u>Item no.</u> | <u>Diameter</u> | <u>Packing</u> |
|-----------------|-----------------|----------------|
| WSB-75 | 8" (20 cm) | --/6/1.60' |
| WSB-100 | 10" (25.5 cm) | --/6/1.70' |

RUSTIC BOWL



| <u>Item no.</u> | <u>Size</u> | <u>Packing</u> |
|-----------------|-----------------------------|----------------|
| WSB-975 | 9" x 7 1/2" (23 x 19 cm) | --/6/1.10' |

WOODEN CUTTING BOARD

| <u>Item no.</u> | <u>Diameter</u> | <u>Packing</u> |
|-----------------|----------------------------|----------------|
| CBW-08 | 8" to 10" (20 to 25.5 cm) | --/6/0.66' |
| CBW-10 | 10" to 12" (25.5 to 30 cm) | --/6/0.93' |
| CBW-12 | 12" to 15" (30 to 38 cm) | --/6/1.38' |



DINNERWARE





MELAMINE SLATE TRAYS

- Available in 2 colors: black (BK), white (WT)



Item no.

MSP-1210

Size

12 ½" x 10 ¼" (32 x 26 cm)

Packing

12/36/1.80'

DINNERWARE COLLECTION

STONEWARE COLLECTIONS

- Handcrafted from Northern Thailand
- Dishwasher and microwave safe

ARQUERITE COLLECTION ACCENT: RUSTIC BRONZE



| <u>Item no.</u> | <u>Diameter</u> | <u>Packing</u> |
|-----------------|-----------------|----------------|
| BWL-AQ | 5" (13 cm) | --/40/ 2.8' |
| PLT-7AQ | 7" (17.5 cm) | --/28/ 2.8' |
| PLT-8AQ | 8" (21 cm) | --/20/ 2.8' |
| PLT-11AQ | 11" (28 cm) | --/12/ 2.8' |

OBSDIAN COLLECTION ACCENT: VOLCANIC BLACK



| <u>Item no.</u> | <u>Diameter</u> | <u>Packing</u> |
|-----------------|-----------------|----------------|
| BWL-VB | 5" (13 cm) | --/40/ 2.8' |
| PLT-7VB | 7" (17.5 cm) | --/28/ 2.8' |
| PLT-8VB | 8" (21 cm) | --/20/ 2.8' |
| PLT-11VB | 11" (28 cm) | --/12/ 2.8' |

STONEWARE COLLECTIONS

- Handcrafted from Northern Thailand
- Dishwasher and microwave safe

 AGATE COLLECTION
 ACCENT: ROYAL BLUE


| <u>Item no.</u> | <u>Diameter</u> | <u>Packing</u> |
|-----------------|-----------------|----------------|
| BWL-RB | 5" (13 cm) | --/40/ 2.8' |
| PLT-7RB | 7" (17.5 cm) | --/28/ 2.8' |
| PLT-8RB | 8" (21 cm) | --/20/ 2.8' |
| PLT-11RB | 11" (28 cm) | --/12/ 2.8' |

 CARICO LAKE COLLECTION
 ACCENT: TURQUISE


| <u>Item no.</u> | <u>Diameter</u> | <u>Packing</u> |
|-----------------|-----------------|----------------|
| BWL-TQ | 5" (13 cm) | --/40/ 2.8' |
| PLT-7TQ | 7" (17.5 cm) | --/28/ 2.8' |
| PLT-8TQ | 8" (21 cm) | --/20/ 2.8' |
| PLT-11TQ | 11" (28 cm) | --/12/ 2.8' |

A black folding clothes rack stands in a bright room. The rack is made of dark wood or metal with a classic X-frame design. It is positioned on a light-colored wooden floor. To the left is a white door with a decorative panel. Behind the rack is a white brick wall. To the right is a large window with white frames, showing green foliage outside. Grey curtains are pulled back from the window. In the foreground on the right, a white planter with a black cat face design holds a green plant. A semi-transparent dark grey banner is overlaid on the right side of the image, containing the word 'FURNITURES' in white capital letters.

FURNITURES

RUBBER WOOD HIGH CHAIR

- Solid wood construction
- Seat belt and strap with safety buckle
- Assembly required
- Overall dimensions:
18 ½"W x 19 ½"L x 28"H (47 x 50 x 71 cm)



Two bars on the front

| <u>Item no.</u> | <u>Finished</u> | <u>Packing</u> |
|-----------------|-----------------|----------------|
| WYC-28N | natural | --/1/0.76' |
| WYC-28M | mahogany | --/1/0.76' |
| WYC-28W | walnut | --/1/0.76' |



One bar on the front

| <u>Item no.</u> | <u>Finished</u> | <u>Packing</u> |
|-----------------|-----------------|----------------|
| WYC-28NA | natural | --/1/0.76' |
| WYC-28MA | mahogany | --/1/0.76' |
| WYC-28WA | walnut | --/1/0.76' |

ACACIA WOOD BOOSTER SEATS

- Solid wood construction
- Available with a nylon safety strap
- Assembly required
- Overall dimensions:
11 ¾"W x 11 ¾"L x 11"H (30 x 30 x 28 cm)



Booster seat with strap

| <u>Item no.</u> | <u>Finished</u> | <u>Packing</u> |
|-----------------|-----------------|----------------|
| WBC-11NS | natural | --/2/1.07' |
| WBC-11MS | mahogany | --/2/1.07' |
| WBC-11WS | walnut | --/2/1.07' |



Booster seat without strap

| <u>Item no.</u> | <u>Finished</u> | <u>Packing</u> |
|-----------------|-----------------|----------------|
| WBC-11N | natural | --/2/1.07' |
| WBC-11M | mahogany | --/2/1.07' |
| WBC-11W | walnut | --/2/1.07' |

ACACIA WOOD TRAY STANDS

- Solid wood construction
- Available in height 32" and 38"
- With rubber slip-proof top rings
- With strong replaceable webbings



Double bars

| <u>Item no.</u> | <u>Height</u> | <u>Color</u> | <u>Packing</u> |
|-----------------|---------------|--------------|----------------|
| WTS-32DM | 32" (81 cm) | mahogany | --/1/1.87' |
| WTS-32DB | 32" (81 cm) | black | --/1/1.87' |



Single bar

| <u>Item no.</u> | <u>Height</u> | <u>Color</u> | <u>Packing</u> |
|-----------------|---------------|--------------|----------------|
| WTS-32SM | 32" (81 cm) | mahogany | --/1/1.87' |
| WTS-32SB | 32" (81 cm) | black | --/1/1.87' |

ACACIA WOOD TRAY STAND

- Solid wood construction
- With rubber slip-proof top rings
- With strong replaceable webbings



Rounded tray stand

| <u>Item no.</u> | <u>Height</u> | <u>Color</u> | <u>Packing</u> |
|-----------------|---------------|--------------|----------------|
| WTS-30RM | 30" (76 cm) | mahogany | --/1/1.50' |
| WTS-30RB | 30" (76 cm) | black | --/1/1.50' |

GLASS RACK

- Available in natural, dark, and walnut finish



| <u>Item no.</u> | <u>Size</u> | <u>Packing</u> |
|-----------------|------------------------------|----------------|
| WGR-1435 | 14" x 35" (35.50 x 89 cm) | --/1/0.62' |



HEALTHCARE

HEALTHCARE INSULATED PRODUCTS

- PP Plastic construction
- Double-walls sealed with pu foam
- Keep hot and cool temperature up to 4 to 6 hours
- Food grade plastic and dishwasher safe
- Suitable for hospital and nursing home use
- Not microwave safe



INSULATED PLATES AND COVERS

- Diameter: 9" (23 cm)

| <u>Item no.</u> | <u>Description</u> | <u>Color</u> | <u>Packing</u> |
|-----------------|--------------------|--------------|----------------|
| 98000 | plate cover | beige | 12/24/2.73' |
| 98002 | plate cover | burgundy | 12/24/2.73' |
| 98004 | plate cover | blue | 12/24/2.73' |
| 98030 | plate base | beige | 12/24/1.44' |
| 98032 | plate base | burgundy | 12/24/1.44' |
| 98034 | plate base | blue | 12/24/1.44' |



INSULATED SOUP BOWLS AND LIDS

- Diameter: 5" (12.5 cm)
- Capacity: 8 oz. (240 ml)

| <u>Item no.</u> | <u>Description</u> | <u>Color</u> | <u>Packing</u> |
|-----------------|--------------------|--------------|----------------|
| 98060 | soup bowl | beige | 12/24/0.83' |
| 98062 | soup bowl | burgundy | 12/24/0.83' |
| 98064 | soup bowl | blue | 12/24/0.83' |
| 98080 | lid | beige | 24/48/0.87' |
| 98082 | lid | burgundy | 24/48/0.87' |
| 98084 | lid | blue | 24/48/0.87' |
| 98360 | clear lid | clear | 48/96/0.37' |



INSULATED JUGS

- Capacity: 1 liter/ 34 oz/ 1 quart

| <u>Item no.</u> | <u>Description</u> | <u>Color</u> | <u>Packing</u> |
|-----------------|--------------------|--------------|----------------|
| 98200 | jug | burgundy | --/12/2.08' |
| 98204 | jug | blue | --/12/2.08' |
| 98220 | lid | burgundy | 24/48/0.79' |
| 98224 | lid | blue | 24/48/0.79' |



INSULATED MUGS AND CAPS

- Capacity: 8 oz. (240 ml)
- Two-tone color

| <u>Item no.</u> | <u>Description</u> | <u>Color</u> | <u>Packing</u> |
|-----------------|---------------------------|--------------|----------------|
| 98120 | mug: single handle | burgundy | --/24/0.78' |
| 98124 | mug: single handle | blue | --/24/0.78' |
| 98140 | pourer mug: single handle | burgundy | --/24/0.58' |
| 98144 | pourer mug: single handle | blue | --/24/0.58' |
| 98260 | mug: double handle | burgundy | --/24/0.86' |
| 98264 | mug: double handle | blue | --/24/0.86' |
| 98160 | cap | burgundy | --/96/0.23' |
| 98164 | cap | blue | --/96/0.23' |
| 98350 | closing cap | frost | --/96/0.49' |
| 98352 | feeding cap | frost | --/96/0.87' |



INSULATED PLATE COVER,
MODERNE

- Diameter: 9" (23 cm)

| <u>Item no.</u> | <u>Color</u> | <u>Packing</u> |
|-----------------|--------------|----------------|
| 98010 | beige | 12/24/2.73' |
| 98012 | burgundy | 12/24/2.73' |
| 98014 | blue | 12/24/2.73' |



INSULATED SOUP BOWLS AND LIDS,
MODERNE

- Diameter: 5" (12.5 cm)
- Capacity: 8 oz. (240 ml)

| <u>Item no.</u> | <u>Description</u> | <u>Color</u> | <u>Packing</u> |
|-----------------|--------------------|--------------|----------------|
| 98070 | soup bowl | beige | 12/24/1.44' |
| 98072 | soup bowl | burgundy | 12/24/1.44' |
| 98074 | soup bowl | blue | 12/24/1.44' |
| 98090 | lid | beige | 24/48/0.83' |
| 98092 | lid | burgundy | 24/48/0.83' |
| 98094 | lid | blue | 24/48/0.83' |



INSULATED MUGS AND CAPS, MODERNE

- Capacity: 8½ oz. (250 ml.)

| <u>Item no.</u> | <u>Description</u> | <u>Color</u> | <u>Packing</u> |
|-----------------|---------------------------|--------------|----------------|
| 98130 | mug: single handle | beige | --/24/0.87' |
| 98132 | mug: single handle | burgundy | --/24/0.87' |
| 98134 | mug: single handle | blue | --/24/0.87' |
| 98270 | mug: double handle | beige | --/24/0.87' |
| 98272 | mug: double handle | burgundy | --/24/0.87' |
| 98274 | mug: double handle | blue | --/24/0.87' |
| 98150 | pourer mug: single handle | beige | --/24/0.83' |
| 98152 | pourer mug: single handle | burgundy | --/24/0.83' |
| 98154 | pourer mug: single handle | blue | --/24/0.83' |



MUG WITH DOUBLE HANDLE

| <u>Item no.</u> | <u>Capacity</u> | <u>Packing</u> |
|-----------------|-----------------|----------------|
| 98410 | 8½ oz. (250 ml) | --/24/0.57' |



1 LITER (1 QUART) MEASURING JUG

- Graduated in ml. and cc.

| <u>Item no.</u> | <u>Description</u> | <u>Color</u> | <u>Packing</u> |
|-----------------|--------------------|--------------|----------------|
| GJ-01CL | complete set | clear | --/24/3.03' |
| GJ-01GN | complete set | green | --/24/3.03' |
| 98280 | jug only | clear | --/48/1.91' |
| 98282 | jug only | burgundy | --/48/1.91' |
| 98284 | jug only | blue | --/48/1.91' |
| 98286 | jug only | green | --/48/1.91' |
| 98290 | lid only | clear | --/48/0.92' |
| 98292 | lid only | burgundy | --/48/0.92' |
| 98294 | lid only | blue | --/48/0.92' |
| 98296 | lid only | green | --/48/0.92' |



BREAD AND BUTTER PLATES

- Size: 5½" x 5½" (14 x 14 cm)

| <u>Item no.</u> | <u>Description</u> | <u>Packing</u> |
|-----------------|--------------------|----------------|
| 98420 | beige plate | 12/144/1.30' |
| 98422 | burgundy plate | 12/144/1.30' |
| 98424 | blue plate | 12/144/1.30' |
| 98430 | frosted lid | 12/144/2.25' |



RECTANGULAR PLATES

- Size: 8" x 5¼" (20 x 13.5 cm)

| <u>Item no.</u> | <u>Description</u> | <u>Packing</u> |
|-----------------|--------------------|----------------|
| 98440 | beige plate | 12/144/2.10' |
| 98442 | burgundy plate | 12/144/2.10' |
| 98444 | blue plate | 12/144/2.10' |
| 98450 | frosted lid | 12/144/3.11' |



SQUARE BOWLS

| <u>Item no.</u> | <u>Description</u> | <u>Packing</u> |
|-----------------|--------------------|----------------|
| 98370 | beige bowl | 48/192/1.71' |
| 98372 | burgundy bowl | 48/192/1.71' |
| 98374 | blue bowl | 48/192/1.71' |
| 98390 | frosted lid | 48/192/0.90' |



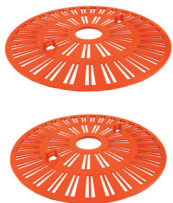
KITCHENWARE & UTENSILS

3-TIER “NON-SKID” SALAD SPINNER 20 LITERS (5 GALLONS)

- 2 pieces of portion dividers for vegetables variations
- 6 non-skid stoppers at the bottom
- Drain tube included
- Capacity of inner basket: 20 liters / overall capacity: 27 liters
- FDA approved PP and ABS plastic
- BPA free
- Patent no. 54655
- Available in 4 colors: Blue (BL), White (WT), Green (GN), and Orange (OR)
- Do not stop by hands right away after spinning



| <u>Item no.</u> | <u>Color</u> | <u>Packing</u> |
|-----------------|--------------|----------------------|
| HSS-20BL | Blue | 1 pc/ctn/3.28' |
| HSS-20GN | Green | or |
| HSS-20OG | Orange | 1 pc/color box/3.81' |
| HSS-20WT | White | |



HIGH HEAT SPATULAS



- Non-Scratching silicone Blade and Nylon 66 Plastic Handle
- Heat Resistant up to 500°F (260°C)
- Dishwasher safe
- BPA free

Flat shape



| <u>Item no.</u> | <u>Length</u> | <u>Packing</u> |
|-----------------|---------------|----------------|
| SRPH-10 | 10 ½" (27 cm) | 24/144/1.33' |
| SRPH-14 | 14" (36 cm) | 24/144/2.10' |
| SRPH-16 | 16 ¼" (42 cm) | 24/144/2.43' |

Spoon Shape



| <u>Item no.</u> | <u>Length</u> | <u>Packing</u> |
|-----------------|---------------|----------------|
| SSPH-10 | 10 ½" (27 cm) | 6/72/0.86' |
| SSPH-14 | 14" (36 cm) | 6/72/1.69' |
| SSPH-16 | 16 ¼" (42 cm) | 6/72/1.88' |

PLASTIC SPATULAS



- EVA Blade and PS Handle
- Dishwasher safe
- BPA free

Flat Shape



| <u>Item no.</u> | <u>Length</u> | <u>Packing</u> |
|-----------------|---------------|----------------|
| SRP-10 | 10" (25.5 cm) | 24/360/2.24' |
| SRP-14 | 14" (36 cm) | 12/288/4.03' |
| SRP-16 | 16" (40.5 cm) | 12/288/4.55' |

Spoon Shape



| <u>Item no.</u> | <u>Length</u> | <u>Packing</u> |
|-----------------|---------------|----------------|
| SSRP-10 | 10" (25.5 cm) | 12/144/1.60' |
| SSRP-14 | 14" (36 cm) | 12/72/1.57' |
| SSRP-16 | 16" (40.5 cm) | 12/36/0.98' |

Narrow Blade



| <u>Item no.</u> | <u>Length</u> | <u>Packing</u> |
|-----------------|---------------|----------------|
| SRPN-10 | 10" (25.5 cm) | 24/432/2.59' |
| SRPN-14 | 14" (36 cm) | 12/288/4.19' |
| SRPN-16 | 16" (40.5 cm) | 12/288/4.72' |

HIGH HEAT SILICONE SPATULAS



Commercially designed for high heat resistance with higher standard and durability

- Heat resistant up to 500°F (260°C)
- Heavy gauge nylon handle for comfortable grip and easy storage
- High heat and odor resistant constructions
- Zero cross-contamination with single molded blade to handle construction
- Patent pending



| <u>Item no.</u> | <u>Size</u> | <u>Packing</u> |
|-----------------|---------------|----------------|
| PSRPH-10 | 10" (25.5 cm) | 12/432/1.19' |
| PSRPH-14 | 14" (35.5 cm) | 12/432/1.40' |
| PSRPH-16 | 16" (40.6 cm) | 12/144/0.76' |

FRENCH FRY SCOOPS

- ABS plastic



| <u>Item no.</u> | <u>Description</u> | <u>Packing</u> |
|-----------------|--------------------|----------------|
| FFS-01 | dual handles | 12/36/3.88' |
| FFS-01L | left handle | 12/36/3.88' |
| FFS-01R | right handle | 12/36/3.88' |

DOUGH SCRAPER

- PE plastic



| <u>Item no.</u> | <u>Description</u> | <u>Packing</u> |
|-----------------|--------------------------------|----------------|
| BS-64 | 3 ¾" x 5 ¾" (9.5 x 14.5 cm) | 252/504/0.88' |

PASTRY BRUSHES

- ABS plastic handle

PBT plastic bristles



| <u>Item no.</u> | <u>Capacity</u> | <u>Packing</u> |
|-----------------|-------------------------|----------------|
| WPB-310 | 1" (2.5 cm) | 12/144/0.80' |
| WPB-315 | 1 ½" (4 cm) | 12/144/0.86' |
| WPB-320 | 2" (5 cm) | 12/144/1.19' |
| WPB-330 | 3" (7.5 cm) | 12/72/0.97' |
| WPB-340 | 4" (10 cm) | 12/72/1.16' |
| WPB-30R | 1" (2.5 cm) (round) | 12/144/1.23' |
| WPB-32H | 2" (5 cm) (with hook) | 12/72/1.05' |
| WPB-33H | 3" (7.5 cm) (with hook) | 12/72/1.31' |

Nylon 66 plastic bristles



| <u>Item no.</u> | <u>Capacity</u> | <u>Packing</u> |
|-----------------|-------------------------|----------------|
| WPB-410 | 1" (2.5 cm) | 12/144/0.80' |
| WPB-415 | 1 ½" (4 cm) | 12/144/0.86' |
| WPB-420 | 2" (5 cm) | 12/144/1.19' |
| WPB-430 | 3" (7.5 cm) | 12/72/0.97' |
| WPB-440 | 4" (10 cm) | 12/72/1.16' |
| WPB-40R | 1" (2.5 cm) (round) | 12/144/1.23' |
| WPB-42H | 2" (5 cm) (with hook) | 12/72/1.05' |
| WPB-43H | 3" (7.5 cm) (with hook) | 12/72/1.31' |

BAR/ICE SCOOP

- 18-0 s/steel
- Overall length: 9 ½"



| <u>Item no.</u> | <u>Capacity</u> | <u>Packing</u> |
|-----------------|-----------------|----------------|
| SCS-4 | 4 oz (120 ml) | 12/144/1.34' |

ALUMINUM SCOOP

- Fountain style, pointed bowl
- Overall length: 8" (20 cm)



| <u>Item no.</u> | <u>Capacity</u> | <u>Packing</u> |
|-----------------|-----------------|----------------|
| SCRA-03 | 2 oz (60 ml) | 60/120/0.79' |

ANTI-FREEZE ICE CREAM DIPPERS

- One-piece cast aluminum, mirror polish
- Color-coded tip, individual color box
- Not recommended for dishwasher

| <u>Item no.</u> | <u>No.</u> | <u>Color</u> | <u>Packing</u> |
|-----------------|------------|--------------|----------------|
| ZZD-12 | 12 | yellow | 12/144/3.57' |
| ZZD-16 | 16 | green | 12/144/3.57' |
| ZZD-20 | 20 | brown | 12/144/3.57' |
| ZZD-24 | 24 | red | 12/144/3.57' |
| ZZD-30 | 30 | blue | 12/144/3.57' |



FLAT BOTTOM SCOOPS

- Cast aluminum, vibro finish



| <u>Item no.</u> | <u>Size</u> | <u>Capacity</u> | <u>Packing</u> |
|-----------------|---------------|-----------------|----------------|
| SCFA-210 | 8" (210 mm) | 6 oz (180 ml) | 24/192/1.98' |
| SCFA-250 | 10" (250 mm) | 12 oz (360 ml) | 25/150/2.02' |
| SCFA-270 | 10½" (270 mm) | 16 oz (480 ml) | 20/120/2.94' |
| SCFA-310 | 12" (310 mm) | 24 oz (720 ml) | 12/120/2.94' |
| SCFA-350 | 14" (350 mm) | 35 oz (1050 ml) | 12/36/1.14' |

ALUMINUM SCOOPS

- One-piece die cast aluminum
- Mirror polish
- Sure-grip contour handles



| <u>Item no.</u> | <u>Capacity</u> | <u>Packing</u> |
|-----------------|-----------------|----------------|
| SCRA-05 | 5 oz (150 ml) | --/72/1.05' |
| SCRA-12 | 12 oz (360 ml) | --/72/1.71' |
| SCRA-24 | 24 oz (720 ml) | --/72/3.07' |
| SCRA-38 | 38 oz (1140 ml) | --/48/2.56' |
| SCRA-58 | 58 oz (1740 ml) | --/36/2.96' |
| SCRA-85 | 85 oz (2550 ml) | --/24/2.89' |

ROLLING PINS

- Natural finish

| <u>Item no.</u> | <u>Type</u> | <u>Size</u> | <u>Packing</u> |
|-----------------|-------------|------------------------------|----------------|
| WRPG-19 | straight | 18" x 1 1/4" (46 x 3 cm) | --/12/0.32' |
| WRPG-20 | straight | 20" x 1 3/4" (50 x 3 cm) | --/12/0.62' |
| WRPG-205 | tapered | 20 1/2" x 1 3/4" (52 x 3 cm) | --/12/0.58' |



MIXING PADDLES

- 3" x 6" blade

| <u>Item no.</u> | <u>Size</u> | <u>Packing</u> |
|-----------------|-------------|----------------|
| WMP-18 | 18" (46 cm) | --/36/0.94' |
| WMP-20 | 20" (50 cm) | --/36/0.66' |
| WMP-24 | 24" (60 cm) | --/24/0.89' |
| WMP-30 | 30" (76 cm) | --24/1.13' |
| WMP-36 | 36" (92 cm) | --/12/0.67' |



ACACIA SECTIONAL CUTTING BOARDS

- Wood butcher block, natural finish
- 1 3/4" thickness



| <u>Item no.</u> | <u>Size</u> | <u>Packing</u> |
|-----------------|--------------------------|----------------|
| WCBB-1218 | 12" x 18" (30 x 46 cm) | --/2/0.65' |
| WCBB-1224 | 12" x 24" (30 x 60 cm) | --/2/0.43' |
| WCBB-1520 | 15" x 20" (38 x 50 cm) | --/2/0.89' |
| WCBB-1622 | 16" x 22" (40.5 x 56 cm) | --/4/2.07' |
| WCBB-1824 | 18" x 24" (46 x 60 cm) | --/2/1.50' |
| WCBB-1830 | 18" x 30" (46 x 76 cm) | --/2/1.86' |

ACACIA WOOD PIZZA PEELS

- Natural wood finish
- Tapered edge design for ease of use

Standard Blade- Short Handle



| <u>Item no.</u> | <u>Length</u> | <u>Blade size</u> | <u>Packing</u> |
|-----------------|---------------|----------------------------|----------------|
| WP-1222 | 22" (56 cm) | 12" x 14" (30 x 33.5 cm) | --/12/1.13' |
| WP-1424 | 24" (60 cm) | 14" x 16" (35.5 x 40.5 cm) | --/12/1.27' |
| WP-1626 | 26" (66 cm) | 16" x 18" (40.5 x 46 cm) | --/12/1.65' |

ACACIA WOOD PIZZA PEELS

- Natural wood finish
- Tapered edge design for ease of use

Standard Blade- Long Handle



| <u>Item no.</u> | <u>Length</u> | <u>Blade size</u> | <u>Packing</u> |
|-----------------|---------------|----------------------------|----------------|
| WP-1236 | 36" (92 cm) | 12" x 14" (30 x 35.5 cm) | --/12/1.87' |
| WP-1436 | 36" (92 cm) | 14" x 16" (35.5 x 40.5 cm) | --/12/1.89' |
| WP-1636 | 36" (92 cm) | 16" x 18" (40.5 x 46 cm) | --/12/2.24' |

Make-up Peels- Standard Blade



| <u>Item no.</u> | <u>Length</u> | <u>Blade size</u> | <u>Packing</u> |
|-----------------|---------------|------------------------|----------------|
| WP-1832 | 32" (80 cm) | 18" x 18" (46 x 46 cm) | --/12/2.22' |
| WP-2034 | 34" (86 cm) | 20" x 20" (50 x 50 cm) | --/12/2.65' |

ACACIA WOOD PIZZA PEELS

- Natural wood finish
- Tapered edge design for ease of use
- Length: 36" (92 cm)

Long Blade- Short Handle



| <u>Item no.</u> | <u>Blade size</u> | <u>Packing</u> |
|-----------------|------------------------------|----------------|
| WP-3608 | 8" x 29 1/2" (20 x 75 cm) | --/24/2.74' |
| WP-3616 | 16" x 29 1/2" (40.5 x 75 cm) | --/12/2.74' |
| WP-3618 | 18" x 29 1/2" (46 x 75 cm) | --/12/3.08' |
| WP-3622 | 22" x 29 1/2" (56 x 75 cm) | --/12/3.76' |

SQUARE PIZZA PEELS WITH GROOVES

Make-up Peels- Standard Blade



| <u>Item no.</u> | <u>Length</u> | <u>Blade size</u> | <u>Packing</u> |
|-----------------|-----------------|----------------------------|----------------|
| WPA-1414 | 19 3/4" (50 cm) | 14" x 14" (35.5 x 35.5 cm) | --/12/1.10' |

GRANITE MORTAR & PESTLE



| <u>Item no.</u> | <u>Diameter</u> | <u>Packing</u> |
|-----------------|-----------------|----------------|
| MPG-5 | 5" (12.5 cm) | 1/4/0.66' |
| MPG-6 | 6" (15 cm) | 1/4/1.00' |
| MPG-7 | 7" (18 cm) | 1/2/0.85' |
| MPG-8 | 8" (20 cm) | 1/2/1.07' |

ALUMINUM PAIL OPENER



| <u>Item no.</u> | <u>Length</u> | <u>Packing</u> |
|-----------------|---------------|----------------|
| POA-8 | 8 ¼" (21 cm) | 12/96/1.81' |

FLAME GUARD OVEN MITTS

- Cotton mitts, heavy polyester padding
- Water and stain resistant
- Protect up to 400°F (204°C)
- Not recommended for machine wash

| <u>Item no.</u> | <u>Size</u> | <u>Packing</u> |
|-----------------|-------------|----------------|
| OM-13 | 13" (33 cm) | --/72/3.33' |
| OM-15 | 15" (38 cm) | --/72/3.48' |
| OM-17 | 17" (43 cm) | --/72/5.02' |
| OM-24 | 24" (60 cm) | --/72/7.04' |



SILICONE SLEEVES

- Heat resistant up to 600°F (315°C)
- Color available: black (BK), blue (BL), red (RD)



| <u>Item no.</u> | <u>Suitable pansize</u> | <u>Packing</u> |
|-----------------|---------------------------------|----------------|
| SS-078 | 7" (18 cm) and 8" (20 cm) | 12/432/1.19' |
| SS-1012 | 10" (25.4 cm) and 12" (30.5 cm) | 12/432/1.40' |
| SS-14 | 14" (35.5 cm) | 12/144/0.76' |

RUBBER SCRAP BLOCK

- Diam: 6 ½" (16.5 cm), height: 4" (10 cm)



| <u>Item no.</u> | <u>Color</u> | <u>Packing</u> |
|-----------------|--------------|----------------|
| SBR-6BK | black | --/6/0.80' |
| SBR-6GY | gray | --/6/0.80' |
| SBR-6WT | white | --/6/0.80' |

VINYL APRON

- Water resistant
- Size: 27" x 30" (69 x 76 cm)



| <u>Item no.</u> | <u>Description</u> | <u>Packing</u> |
|-----------------|------------------------|----------------|
| APP-2730 | full apron | 1/36/1.33' |
| APP-2730BK | full apron with pocket | 1/36/1.33' |

PLASTIC SCOOPS

- SAN plastic
- Sealed hollow handle with loop
- Chipping and scratching resistant
- Available in 7 colors: amber (AM), black (BK), red (RD), clear (CL), smoke (SK), white (WT), yellow (YL)



| <u>Item no.</u> | <u>Capacity</u> | <u>Packing</u> |
|-----------------|-----------------|----------------|
| ASP-06 | 6 oz (180ml) | 12/144/2.99' |
| ASP-12 | 12 oz (360 ml) | 12/72/2.68' |
| ASP-24 | 24 oz (720 ml) | 12/48/2.09' |
| ASP-36 | 36 oz (1080 ml) | 12/36/2.44' |
| ASP-64 | 64 oz (1920 ml) | 12/24/2.05' |

PLASTIC UTILITY TONGS

- Available in 4 colors: clear (CL), black (BK), red (RD), white (WT)
- Length: 9" (23 cm)



| <u>Item no.</u> | <u>Material</u> | <u>Packing</u> |
|-----------------|-----------------|----------------|
| UTP-9 | nylon | 12/288/5.01' |
| TUTP-9 | tritan | 12/288/5.01' |
| PUTP-9 | PETG | 12/288/5.01' |

FLATEWARE CYLINDER

- PE plastic



| <u>Item no.</u> | <u>Color</u> | <u>Packing</u> |
|-----------------|--------------|----------------|
| FCP-1WT | white | 36/72/2.00' |
| FCP-1BK | black | 36/72/2.00' |

SERVICEWARE



“CRIKO” SQUEEZE DISPENSERS

- Leakproof when set upside down
- Quick & Easy use for liquid and high viscosity fluid
- Food grade polyethylene plastic bottle
- BPA FREE
- Polypropylene plastic lids with 8 colors available
- Dishwasher safe



Narrow mouth lids

| <u>Item no.</u> | <u>Color</u> | <u>Packing</u> |
|-----------------|--------------|----------------|
| SDR-BL | Blue | 12/720/0.90' |
| SDR-BN | Brown | 12/720/0.90' |
| SDR-CL | White | 12/720/0.90' |
| SDR-GN | Green | 12/720/0.90' |
| SDR-OG | Orange | 12/720/0.90' |
| SDR-PU | Purple | 12/720/0.90' |
| SDR-RD | Red | 12/720/0.90' |
| SDR-YL | Yellow | 12/720/0.90' |

Wide mouth lids

| <u>Item no.</u> | <u>Color</u> | <u>Packing</u> |
|-----------------|--------------|----------------|
| SDFC-BL | Blue | 12/240/1.20' |
| SDFC-BN | Brown | 12/240/1.20' |
| SDFC-CL | White | 12/240/1.20' |
| SDFC-GN | Green | 12/240/1.20' |
| SDFC-OG | Orange | 12/240/1.20' |
| SDFC-PU | Purple | 12/240/1.20' |
| SDFC-RD | Red | 12/240/1.20' |
| SDFC-YL | Yellow | 12/240/1.20' |

NARROW MOUTH "CRIKO" SQUEEZE DISPENSERS



| <u>Item no.</u> | <u>Capacity</u> | <u>Packing</u> |
|-----------------|-----------------|----------------|
| SDR-04 | 4 oz. (120 ml) | --/72/0.96' |
| SDR-08 | 8 oz. (240 ml) | --/72/1.28' |
| SDR-12 | 12 oz. (360 ml) | --/36/0.94' |
| SDR-24 | 24 oz. (720 ml) | --/36/1.67' |

WIDE MOUTH "CRIKO" SQUEEZE DISPENSERS



| <u>Item no.</u> | <u>Capacity</u> | <u>Packing</u> |
|-----------------|------------------|----------------|
| SDFC-16 | 16 oz. (480 ml) | --/24/1.18' |
| SDFC-24 | 24 oz. (720 ml) | --/12/0.76' |
| SDFC-32 | 32 oz. (1000 ml) | --/12/0.98' |

GRADUATED BOTTLE



| <u>Item no.</u> | <u>Capacity</u> | <u>Packing</u> |
|-----------------|-----------------|----------------|
| SDM-24 | 24 oz. (720 ml) | --/12/0.80' |

ACRYLIC CRIKO BOTTLE HOLDER



| <u>Item no.</u> | <u>Bottle Size</u> | <u>Size</u> | <u>Packing</u> |
|-----------------|--------------------|------------------|----------------|
| SDHS-3 | 12 OZ. | 9¼" x 3" x 3½" | 1/12/1.40' |
| SDHL-3 | 16, 24 OZ. | 11½" x 3½" x 3½" | 1/12/1.60' |

24 OZ. GRADUATED SQUEEZE DISPENSERS

- PE plastic bottle



Color Bottles with Color Caps

| <u>Item no.</u> | <u>Color</u> | <u>Packing</u> |
|-----------------|--------------|----------------|
| SDGC-24BL | Blue | --/12/0.85' |
| SDGC-24BN | Brown | --/12/0.85' |
| SDGC-24GN | Green | --/12/0.85' |
| SDGC-24OG | Orange | --/12/0.85' |
| SDGC-24PU | Purple | --/12/0.85' |
| SDGC-24RD | Red | --/12/0.85' |
| SDGC-24YL | Yellow | --/12/0.85' |



Clear Bottles with Color Caps

| <u>Item no.</u> | <u>Color</u> | <u>Packing</u> |
|-----------------|--------------|----------------|
| SDG-24BL | Blue | --/12/0.85' |
| SDG-24BN | Brown | --/12/0.85' |
| SDG-24CL | White | --/12/0.85' |
| SDG-24GN | Green | --/12/0.85' |
| SDG-24OG | Orange | --/12/0.85' |
| SDG-24PU | Purple | --/12/0.85' |
| SDG-24RD | Red | --/12/0.85' |
| SDG-24YL | Yellow | --/12/0.85' |

TRIPLE NOZZLES SQUEEZE DISPENSERS

- PE plastic bottle



| <u>Item no.</u> | <u>Capacity</u> | <u>Packing</u> |
|-----------------|-----------------|----------------|
| SDPT-08 | 8 oz (240 ml) | 12/48/1.09' |
| SDPT-12 | 12 oz (360 ml) | 12/36/1.07' |
| SDPT-16 | 16 oz (480 ml) | 12/24/1.18' |
| SDPT-24 | 24 oz (720 ml) | 12/12/0.72' |
| SDPT-32 | 32 oz (1000 ml) | 12/12/0.98' |

PP Lids

| <u>Item no.</u> | <u>Color</u> | <u>Packing</u> |
|-----------------|--------------|----------------|
| SDPT-CL | clear | --/240/1.41' |
| SDPT-RD | red | --/240/1.41' |
| SDPT-YL | yellow | --/240/1.41' |

WIDE MOUTH SQUEEZE DISPENSERS

- PE plastic bottle



| <u>Item no.</u> | <u>Capacity</u> | <u>Packing</u> |
|-----------------|-----------------|----------------|
| SDPW-08 | 8 oz (240 ml) | --/48/1.09' |
| SDPW-12 | 12 oz (360 ml) | --/36/1.07' |
| SDPW-16 | 16 oz (480 ml) | --/24/1.18' |
| SDPW-24 | 24 oz (720 ml) | --/12/0.76' |
| SDPW-32 | 32 oz (1000 ml) | --/12/0.98' |

PP Plastic Lids

| <u>Item no.</u> | <u>Color</u> | <u>Packing</u> |
|-----------------|--------------|----------------|
| SDPW-CL | clear | --/240/1.41' |
| SDPW-RD | red | --/240/1.41' |
| SDPW-YL | yellow | --/240/1.41' |

WIDE MOUTH SQUEEZE DISPENSERS WITH CAPS

- PE plastic bottle



| <u>Item no.</u> | <u>Capacity</u> | <u>Packing</u> |
|-----------------|-----------------|----------------|
| SDNW-08 | 8 oz (240 ml) | --/48/1.09' |
| SDNW-12 | 12 oz (360 ml) | --/36/1.07' |
| SDNW-16 | 16 oz (480 ml) | --/24/1.18' |
| SDNW-24 | 24 oz (720 ml) | --/12/0.76' |
| SDNW-32 | 32 oz (1000 ml) | --/12/0.98' |

PP Plastic Lids with caps

| <u>Item no.</u> | <u>Color</u> | <u>Packing</u> |
|-----------------|--------------|----------------|
| SDNW-CL | clear | --/240/1.41' |
| SDNW-RD | red | --/240/1.41' |
| SDNW-YL | yellow | --/240/1.41' |

NARROW MOUTH SQUEEZE DISPENSERS

- PE plastic bottle



| <u>Item no.</u> | <u>Capacity</u> | <u>Packing</u> |
|-----------------|-----------------|----------------|
| SDP-04 | 4 oz. (120 ml) | --/72/0.96' |
| SDP-08 | 8 oz. (240 ml) | --/72/1.28' |
| SDP-12 | 12 oz. (360 ml) | --/36/0.94' |
| SDP-24 | 24 oz. (720 ml) | --/36/1.67' |

PP Plastic Lids

| <u>Item no.</u> | <u>Color</u> | <u>Packing</u> |
|-----------------|--------------|----------------|
| SDP-CL | clear | --/720/0.98' |
| SDP-RD | red | --/720/0.98' |
| SDP-YL | yellow | --/720/0.98' |

NARROW MOUTH SQUEEZE DISPENSERS WITH CAPS

- PE plastic bottle



| <u>Item no.</u> | <u>Capacity</u> | <u>Packing</u> |
|-----------------|-----------------|----------------|
| SDN-04 | 4 oz. (120 ml) | --/72/0.96' |
| SDN-08 | 8 oz. (240 ml) | --/72/1.28' |
| SDN-12 | 12 oz. (360 ml) | --/36/0.94' |
| SDN-24 | 24 oz. (720 ml) | --/36/1.67' |

PP Plastic Lids with caps

| <u>Item no.</u> | <u>Color</u> | <u>Packing</u> |
|-----------------|--------------|----------------|
| SDN-CL | clear | --/720/0.98' |
| SDN-RD | red | --/720/0.98' |
| SDN-YL | yellow | --/720/0.98' |

CHECK TRAYS

- P.P. plastic
- Available in 2 colors: black (bk), brown (bn)



| <u>Item no.</u> | <u>Capacity</u> | <u>Wording</u> | <u>Packing</u> |
|-----------------|----------------------------|----------------|----------------|
| TS-64 | 6 ½" x 4 ½" (16.5 x 12 cm) | merci | 12/72/0.39' |
| TS-65 | 6 ½" x 4 ½" (16.5 x 12 cm) | thank you | 12/72/0.39' |



| <u>Item no.</u> | <u>Capacity</u> | <u>Wording</u> | <u>Packing</u> |
|-----------------|------------------------|----------------|----------------|
| TS-84 | 8" x 5" (20 x 12.5 cm) | merci | 12/72/0.44' |
| TS-85 | 8" x 5" (20 x 12.5 cm) | thank you | 12/72/0.44' |

MELAMINE RAMEKINS

- Available in 3 colors: white (WT), red (RD), marble (M)

Straight smooth wall



| <u>Item no.</u> | <u>Capacity</u> | <u>Packing</u> |
|-----------------|-----------------|----------------|
| RMA-30 | 3 oz (90 ml) | --/48/0.41' |
| RMA-40 | 4 oz (120 ml) | --/48/0.47' |

Tapered smooth wall



| <u>Item no.</u> | <u>Capacity</u> | <u>Packing</u> |
|-----------------|-----------------|----------------|
| RM-15 | 1 ½ oz (45 ml) | --/72/0.21' |
| RM-20 | 2 oz (60 ml) | --/72/0.28' |
| RM-30 | 3 oz (90 ml) | --/72/0.41' |
| RM-40 | 4 oz (120 ml) | --/72/0.44' |
| RM-60 | 6 oz (180 ml) | --/72/0.46' |

Fluted wall



| <u>Item no.</u> | <u>Capacity</u> | <u>Packing</u> |
|-----------------|-----------------|----------------|
| RMF-15 | 1 ½ oz (45 ml) | --/72/0.22' |
| RMF-25 | 2 ½ oz (75 ml) | --/72/0.39' |
| RMF-30 | 3 oz (90 ml) | --/72/0.42' |
| RMF-45 | 4 ½ oz (135 ml) | --/72/0.49' |
| RMF-60 | 6 oz (180 ml) | --/72/0.50' |

MELAMINE PRODUCTS

- Safe for temperature up to 158 °F (70 °C)
- Dishwasher safe
- Not microwave safe

MELAMINE SALSA DISHES

- Available in 4 colors: black (BK), red (RD), white (WT), marble (M)



SD-04



SD-05

| <u>Item no.</u> | <u>Capacity</u> | <u>Packing</u> |
|-----------------|-----------------|----------------|
| SD-04 | 4 oz (120 ml) | --/48/0.36' |
| SD-05 | 5 oz (150 ml) | --/48/0.76' |

MELAMINE ASHTRAYS

- Available in 3 colors: black (BK), red (RD), marble (M)

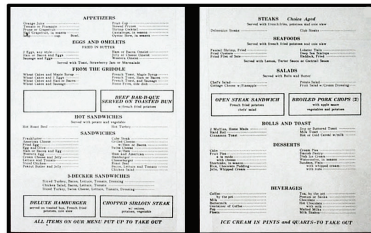
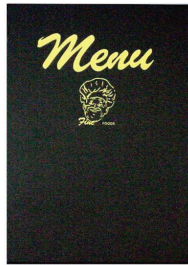


| <u>Item no.</u> | <u>Diameter</u> | <u>Packing</u> |
|-----------------|-----------------|----------------|
| AYM-4 | 4" (10 cm) | 12/144/1.62' |
| AYM-5 | 5" (12.5 cm) | 12/144/2.06' |

VINYL MENU COVERS

Menu covers

- Heat sealed border, double fold



| Item no. | Size | Packing |
|------------|---------------------------|-------------|
| MCV-1724BK | 7" x 9 1/2" (18 x 24 cm) | 12/72/0.99' |
| MCV-2130BK | 8 3/4" x 12" (21 x 30 cm) | 12/72/1.49' |

Double fold transparent menu covers

- Heat sealed border



| Item no. | Size | Packing |
|----------|---------------------------------|--------------|
| MCV-1825 | 7" x 10" (18 x 25.5 cm) | 18/144/0.99' |
| MCV-2229 | 8 3/4" x 11 1/2" (22.5 x 29 cm) | 24/120/1.21' |

VINYL MENU COVERS

Guest check cover

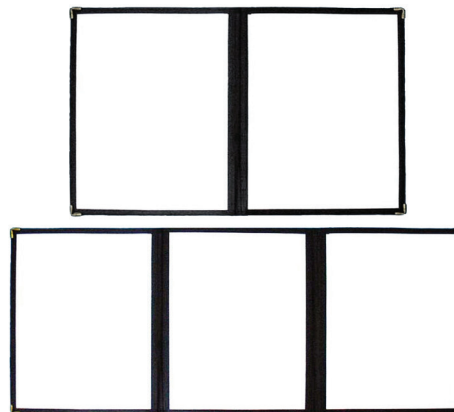
- Heat sealed borders with 1 inside pocket
- Hot stamped "thank you" in gold color
- Size: 5 ½" x 10 ½" (14 x 26.6 cm)



| <u>Item no.</u> | <u>Size</u> | <u>Packing</u> |
|-----------------|----------------|----------------|
| MCV-1426BK | without pocket | 12/120/1.25' |
| MCV-1426BKP | with pocket | 12/120/1.25' |

Menu covers

- Transparent with black leatherette binding
- Reinforced metal corners



| <u>Item no.</u> | <u>Size</u> | <u>Description</u> | <u>Packing</u> |
|-----------------|-----------------------------|--------------------|----------------|
| MCV-1623BK | 6 ¾" x 10 ¼" (17 x 26 cm) | Single Fold | 24/120/0.89' |
| MCVD-1623BK | 6 ¾" x 10 ¼" (17 x 26 cm) | Double Fold | 24/120/1.88' |
| MCVD-1928BK | 7 ½" x 11 ¼" (19 x 28.5 cm) | Double Fold | 24/120/1.23' |
| MCV-2128BK | 9" x 12 ½" (23 x 32 cm) | Single Fold | 25/200/1.76' |
| MCVD-2128BK | 9" x 12 ½" (23 x 32 cm) | Double Fold | 24/100/1.76' |
| MCVT-2128BK | 9" x 12 ½" (23 x 32 cm) | Triple Fold | 25/50/1.12' |

WOODEN SERVING TRAYS

- With stainless steel reinforced corners
- Height: 2" (5 cm)



| <u>Item no.</u> | <u>Size</u> | <u>Packing</u> |
|-----------------|----------------------------|----------------|
| LUX-2518-M | 25" x 15" (63.5 x 38 cm) | 1/4/2.41' |
| LUX-1816-M | 19" x 14 1/4" (48 x 36 cm) | 1/4/1.76' |
| LUX-2121-M | 21" x 21" (53 x 53 cm) | 1/4/2.37' |

ABS PLASTIC TRAY

- Size: 20 3/4" x 12 3/4" x 1" h (52.5 x 32 x 2.5 cm)
- Fits 1/1 food pan cover



| <u>Item no.</u> | <u>Color</u> | <u>Packing</u> |
|-----------------|--------------|----------------|
| TP-1220RD | red | --/12/1.40' |
| TP-1220BK | black | --/12/1.40' |
| TP-1220WT | white | --/12/1.40' |

WOODEN ROLLING PIN

- Overall length: 10" (25.5 cm)



| <u>Item no.</u> | <u>Color</u> | <u>Packing</u> |
|-----------------|--------------|----------------|
| WRP-BK | black | --/12/0.95' |
| WRP-M | marbled | --/12/0.95' |

SERVING SPOON

- Overall length: 12" (30 cm)



| <u>Item no.</u> | <u>Color</u> | <u>Packing</u> |
|-----------------|--------------|----------------|
| WSP-BK | ombre black | --/12/0.95' |
| WSP-M | marbled | --/12/0.95' |
| WSP-WH | ombre white | |

SERVING FORK

- Overall length: 12" (30 cm)



| <u>Item no.</u> | <u>Color</u> | <u>Packing</u> |
|-----------------|--------------|----------------|
| WF-BK | ombre black | --/40/0.70' |
| WF-M | marbled | --/40/0.70' |
| WF-WH | ombre white | --/40/0.70' |

SERVING PADDLE

- Overall length: 12" (30 cm)



| <u>Item no.</u> | <u>Color</u> | <u>Packing</u> |
|-----------------|--------------|----------------|
| WPD-BK | ombre black | --/40/0.70' |
| WPD-M | marbled | --/40/0.70' |
| WPD-WH | ombre white | --/40/0.70' |

MELAMINE GARNISH SPOON

- Available in 2 colors: black (bk), white (wt)



| <u>Item no.</u> | <u>Color</u> | <u>Packing</u> |
|-----------------|--------------|----------------|
| MGS-08 | 8 ¼" (21 cm) | 48/288/0.9' |

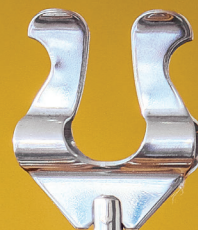
PIZZA DELIVERY BAG

- Vinyl plastic with 1" (2.5 cm) thick foam padding



| <u>Item no.</u> | <u>Color</u> | <u>Color</u> | <u>Packing</u> |
|-----------------|--------------|------------------------|----------------|
| PZB-18BL | blue | 18" x 18" (46 x 46 cm) | --/10/3.79' |
| PZB-18RD | red | 18" x 18" (46 x 46 cm) | --/10/3.79' |
| PZB-18BK | black | 18" x 18" (46 x 46 cm) | --/10/3.79' |
| PZB-20BL | blue | 20" x 20" (50 x 50 cm) | --/6/3.22' |
| PZB-20RD | red | 20" x 20" (50 x 50 cm) | --/6/3.22' |
| PZB-20BK | black | 20" x 20" (50 x 50 cm) | --/6/3.22' |

TABLE PRESENTATION



SERVING BASKETS

- Stackable P.P. plastic
- Dishwasher safe
- Available in 8 colors: black (BK), brown (BN), green (GN), orange (OG), red (RD), tan (TN), white (WT), yellow (YL)

| <u>Item no.</u> | <u>Shape</u> | <u>Size</u> | <u>Packing</u> |
|-----------------|--------------|-------------------------------------|----------------|
| FB-19 | round | 8" x 2" (20 x 5 cm) | --/36/0.97' |
| FB-20 | oval | 8" x 5 ½" x 1 ¾" (20 x 14 x 4.5 cm) | --/72/0.70' |
| FB-24 | oval | 9 ½" x 6" x 1 ¾" (24 x 15 x 4.5 cm) | --/36/0.59' |



SIDE ORDER BASKETS

- Stackable P.P. plastic
- Dishwasher safe
- Available in 8 colors: black (BK), brown (BN), green (GN), orange (OG), red (RD), tan (TN), white (WT), yellow (YL)

| <u>Item no.</u> | <u>Size</u> | <u>Packing</u> |
|-----------------|-----------------------------------|----------------|
| FB-23 | 9 ½" x 6" x 1 ½" (24 x 15 x 4 cm) | --/72/0.77' |
| FB-27 | 11" x 7" x 1 ½" (28 x 18 x 4 cm) | --/36/0.55' |



PLASTIC STEAK MARKERS

- P.P. plastic
- With well defined identification and color coding



| <u>Item no.</u> | <u>Marked</u> | <u>Color</u> | <u>Packing</u> |
|-----------------|---------------|--------------|-----------------|
| SM-RRD | rare | red | 1000/5000/0.40' |
| SM-MRPK | medium rare | pink | 1000/5000/0.40' |
| SM-MBL | medium | blue | 1000/5000/0.40' |
| SM-MWB | medium well | brown | 1000/5000/0.40' |
| SM-WBK | well | black | 1000/5000/0.40' |
| SM-MWH | medium | white | 1000/5000/0.40' |
| SM-WTA | well | tan | 1000/5000/0.40' |
| SM-MYL | medium | yellow | 1000/5000/0.40' |

BERRY DISHES, 5 OZ. (150 ML)

- SAN plastic



| <u>Item no.</u> | <u>Description</u> | <u>Packing</u> |
|-----------------|--------------------|----------------|
| 98340BK | black | 48/192/2.32' |
| 98340CL | clear | 48/192/2.32' |
| 98340WT | white | 48/192/2.32' |
| 98360 | lid only | 48/96/0.37' |

CONDIMENT JAR SET

- SAN plastic
- Diameter: 3" (7.50 cm)
- Capacity: 7 oz.



| <u>Item no.</u> | <u>Description</u> | <u>Packing</u> |
|-----------------|--------------------|----------------|
| CJ-07 | jar & lid | 12/72/2.80' |
| CJ-07J | jar only | 12/72/2.80' |
| CJ-07L | lid only | 12/72/2.80' |

PLASTIC PADDLE/ SPREADER

- P.P. plastic



| <u>Item no.</u> | <u>Description</u> | <u>Packing</u> |
|-----------------|--------------------|----------------|
| CJ-04P | 5" (12.5 cm) | 144/1728/0.49' |

100% MELAMINE PRODUCTS

- Safe for temperature up to 158 °f (70 °C)
- Dishwasher safe
- Not microwave safe

Melamine tortilla server set

- Available in 3 colors: black (BK), red (RD), white (WT)



| <u>Item no.</u> | <u>Diameter</u> | <u>Packing</u> |
|-----------------|-----------------|----------------|
| TS-08 | 7 ½" (19 cm) | --/24/2.58' |

WOOD TABLE SIGNS

- Black wood with silver polyester sign
- Size: 3" x 1 ¾" h (2.5 x 6.5 cm)



| <u>Item no.</u> | <u>Sign</u> | <u>Description</u> | <u>Packing</u> |
|-----------------|-------------|--------------------|----------------|
| WS-2NSBK | no smoking | two-sided signs | 12/72/0.67' |
| WS-2RKBK | reserved | two-sided signs | 12/72/0.67' |
| WS-CFBK | coffee | one-sided sign | 12/72/0.67' |
| WS-HTBK | hot tea | one-sided sign | 12/72/0.67' |
| WS-HWBK | hot water | one-sided sign | 12/72/0.67' |
| WS-ITBK | ice tea | one-sided sign | 12/72/0.67' |
| WS-CRBK | cream | one-sided sign | 12/72/0.67' |
| WS-DFBK | decaf | one-sided sign | 12/72/0.67' |
| WS-MBK | milk | one-sided sign | 12/72/0.67' |
| WS-SKBK | skim milk | one-sided sign | 12/72/0.67' |

PLASTIC TABLE SIGN

- 2-way stand sign with magnets
- SAN plastic



| <u>Item no.</u> | <u>Size</u> | <u>Packing</u> |
|-----------------|----------------------------|----------------|
| PS-425 | 3 ¼" x 2 ½" (9.5 x 6.5 cm) | 12/48/1.20' |

PLASTIC HOLDERS

- ABS plastic
- Available in 8 colors: black (BK), blue (BL), brown (BN), green (GN), gray (GY), red (RD), chrome (CP), gold (GP)



| <u>Item no.</u> | <u>Size</u> | <u>Packing</u> |
|-----------------|--------------------------|----------------|
| MHP-3 | 3 ¼" x 1" h (8 x 2.5 cm) | 48/96/0.30' |

DELUXE MENU/ CARD STANDS

- Available in 2 materials:
 - 18-8 S/Steel
 - Steel with Electrodeposition Plating (EDP) in black (BK)

| <u>Item no.</u> | <u>Height</u> | <u>Packing</u> |
|-----------------|---------------|----------------|
| DCH-6 | 6" (15 cm) | 12/72/0.93' |
| DCH-8 | 8" (20 cm) | 12/72/1.24' |
| DCH-12 | 12" (30 cm) | 12/72/1.82' |
| DCH-15 | 15" (38 cm) | 12/72/2.43' |
| DCH-18 | 18" (46 cm) | 12/72/2.73' |



MENU CLIP

- S/steel, gadroon base



| <u>Item no.</u> | <u>Size</u> | <u>Packing</u> |
|-----------------|---------------|----------------|
| MHS-1 | 2 ½" (6.5 cm) | 12/600/3.28' |

TERRA COTTA TAPAS DISH



| <u>Item no.</u> | <u>Diameter</u> | <u>Description</u> | <u>Packing</u> |
|-----------------|-----------------|--------------------|----------------|
| TPD-14BK | 14" (35.5 cm) | with handle | --/36/1.63' |
| TPD-12 | 12" (30 cm) | without handle | --/36/1.21' |
| TPD-14 | 14" (35.5 cm) | without handle | --/36/1.63' |
| TPD-16 | 16" (40.5 cm) | without handle | --/36/1.99' |

WOOD UNDERLINERS

- For sizzling platters
- Thickness: ¾" (2 cm)

| <u>Item no.</u> | <u>Color</u> | <u>Size</u> | <u>Packing</u> |
|-----------------|--------------|-----------------------------|----------------|
| WUR-120 | walnut | 12" x 8 ¼" (30 x 21 cm) | --/12/0.72' |
| WUR-1259 | walnut | 12 ½" x 8 ¾" (30 x 22 cm) | --/12/0.77' |
| WUR-130 | walnut | 13 ½" x 9 ½" (34 x 24 cm) | --/12/0.94' |
| WUR-1258 | natural | 12 ½" x 7 ¾" (32 x 19.5 cm) | --/12/0.71' |



ALPHA-NUMERIC INDEX

ALPHA-NUMERIC INDEX

0-9

| | |
|-------|-----|
| 14 | 025 |
| 16 | 025 |
| 98000 | 049 |
| 98002 | 049 |
| 98004 | 049 |
| 98010 | 051 |
| 98012 | 051 |
| 98014 | 051 |
| 98030 | 049 |
| 98032 | 049 |
| 98034 | 049 |
| 98060 | 049 |
| 98062 | 049 |
| 98064 | 049 |
| 98070 | 051 |
| 98072 | 051 |
| 98074 | 051 |
| 98080 | 049 |
| 98082 | 049 |
| 98084 | 049 |
| 98090 | 051 |
| 98092 | 051 |
| 98094 | 051 |
| 98120 | 050 |
| 98124 | 050 |
| 98130 | 052 |
| 98132 | 052 |
| 98134 | 052 |

| | |
|-------|----------|
| 98140 | 050 |
| 98144 | 050 |
| 98150 | 052 |
| 98152 | 052 |
| 98154 | 052 |
| 98160 | 050 |
| 98164 | 050 |
| 98200 | 050 |
| 98204 | 050 |
| 98220 | 050 |
| 98224 | 050 |
| 98260 | 050 |
| 98264 | 050 |
| 98270 | 052 |
| 98272 | 052 |
| 98274 | 052 |
| 98280 | 053 |
| 98282 | 053 |
| 98284 | 053 |
| 98286 | 053 |
| 98290 | 053 |
| 98292 | 053 |
| 98294 | 053 |
| 98296 | 053 |
| 98350 | 050 |
| 98352 | 050 |
| 98360 | 049, 090 |
| 98370 | 054 |
| 98372 | 054 |
| 98374 | 054 |

| | |
|---------|-----|
| 98390 | 054 |
| 98402 | 025 |
| 98410 | 052 |
| 98420 | 053 |
| 98422 | 053 |
| 98424 | 053 |
| 98430 | 053 |
| 98440 | 054 |
| 98442 | 054 |
| 98444 | 054 |
| 98450 | 054 |
| 98552 | 025 |
| 98554 | 025 |
| 98556 | 025 |
| 98572 | 025 |
| 98574 | 025 |
| 98576 | 025 |
| 98340BK | 090 |
| 98340CL | 090 |
| 98340WT | 090 |

A

| | |
|------------|-----|
| APD-1321 | 031 |
| APD-816S | 031 |
| APD-818 | 031 |
| APP-2730 | 070 |
| APP-2730BK | 070 |
| ASP-06 | 070 |
| ASP-12 | 070 |

ALPHA-NUMERIC INDEX

ASP-24 070
 ASP-36 070
 ASP-64 070
 AYM-4 081
 AYM-5 081

B

BC-01 026
 BC-04 026
 BC-06 026
 BCP-01BK 019
 BCP-02BK 020
 BCP-03BK 020
 BCP-03H 020
 BCP-04BK 020
 BCP-04H 020
 BCP-06BK 020
 BCP-06H 020
 BM-1218BK 021
 BM-1218BL 021
 BM-1218BN 021
 BM-1218GN 021
 BM-1218PL 021
 BM-1218RD 021
 BM-1218YL 021
 BM-743BK 021
 BM-743BL 021
 BM-743BN 021
 BM-743GN 021

BM-743PL 021
 BM-743RD 021
 BM-743YL 021
 BM-753BK 021
 BM-753BL 021
 BM-753BN 021
 BM-753GN 021
 BM-753PL 021
 BM-753RD 021
 BM-753YL 021
 BS-64 060
 BU-02 031
 BU-03 031
 BWL-AQ 041
 BWL-GD 040
 BWL-RB 042
 BWL-TQ 042
 BWL-VB 041

C

CBW-08 037
 CBW-10 037
 CBW-12 037
 CBW-1218 035
 CBW-14 036
 CBW-188 036
 CBW-1910 036
 CBW-189 036
 CCP-12A 032

CJ-04P 091
 CJ-07 091
 CJ-07J 091
 CJ-07L 091
 CTH-35 027

D

DCH-12 093
 DCH-15 093
 DCH-18 093
 DCH-6 093
 DCH-8 093

F

FB-19 089
 FB-20 089
 FB-23 089
 FB-24 089
 FB-27 089
 FCP-1BK 071
 FCP-1WT 071
 FFS-01 060
 FFS-01L 060
 FFS-01R 060
 FTP-05 024
 FTP-08 024
 FTP-10 024
 FTP-12 024

ALPHA-NUMERIC INDEX

G

| | |
|----------|-----|
| GJ-01CL | 053 |
| GJ-01GN | 053 |
| GMP-618 | 014 |
| GMP-618S | 014 |
| GMP-636 | 014 |
| GMP-636S | 014 |
| GMP-672 | 014 |
| GMP-672S | 014 |
| GRP-2 | 019 |
| GRP-3 | 019 |
| GRP-3RS | 019 |

H

| | |
|----------|-----|
| HSS-20BL | 056 |
| HSS-20GN | 056 |
| HSS-20OG | 056 |
| HSS-20WT | 056 |

I

| | |
|----------|-----|
| ISM-13BK | 022 |
| ISM-13BL | 022 |
| ISM-13CL | 022 |
| ISM-13GN | 022 |
| ISM-13RD | 022 |
| ISM-13WT | 022 |

L

| | |
|------------|-----|
| LUX-1816-M | 084 |
| LUX-2121-M | 084 |
| LUX-2518-M | 084 |

M

| | |
|-------------|-----|
| MCV-1825 | 082 |
| MCV-1426BK | 083 |
| MCV-2229 | 082 |
| MCV-1426BKP | 083 |
| MCV-1623BK | 083 |
| MCV-1724BK | 082 |
| MCV-2128BK | 083 |
| MCV-2130BK | 082 |
| MCVD-1623BK | 083 |
| MCVD-1928BK | 083 |
| MCVD-2128BK | 083 |
| MCVT-2128BK | 083 |
| MGS-08 | 087 |
| MHP-3 | 093 |
| MHS-1 | 094 |
| MPG-5 | 068 |
| MPG-6 | 068 |
| MPG-7 | 068 |
| MPG-8 | 068 |
| MSP-1210 | 040 |
| MSP-14 | 030 |

| | |
|--------|-----|
| MSP-18 | 030 |
| MSP-21 | 030 |

N

| | |
|--------|-----|
| NMD-BK | 023 |
| NSM-11 | 022 |
| NSM-14 | 022 |
| NSM-16 | 022 |

O

| | |
|--------|-----|
| OM-13 | 068 |
| OM-15 | 068 |
| OM-17 | 068 |
| OM-24 | 068 |
| OPP-18 | 023 |
| OPP-20 | 023 |
| OPP-28 | 023 |

P

| | |
|----------|-----|
| PC-01BK | 019 |
| PC-01SK | 019 |
| PFF-02CL | 017 |
| PFF-02GN | 017 |
| PFF-02RD | 017 |
| PFF-02YL | 017 |
| PLT-11AQ | 041 |
| PLT-11GD | 040 |

ALPHA-NUMERIC INDEX

PLT-11RB 042
 PLT-11TQ 042
 PLT-11VB 041
 PLT-7AQ 041
 PLT-7GD 040
 PLT-7RB 042
 PLT-7TQ 042
 PLT-7VB 041
 PLT-8AQ 041
 PLT-8GD 040
 PLT-8RB 042
 PLT-8TQ 042
 PLT-8VB 041
 POA-8 068
 PRP-01BK 016
 PRP-01BL 016
 PRP-01CL 016
 PRP-01GN 016
 PRP-01RD 016
 PRP-01WT 016
 PRP-01YL 016
 PRP-02BK 016
 PRP-02BL 016
 PRP-02CL 016
 PRP-02GN 016
 PRP-02RD 016
 PRP-02WT 016
 PRP-02YL 016
 PRP-03BL 015
 PRP-03GN 015

PRP-03OG 015
 PRP-03RD 015
 PRP-03WT 015
 PRP-03YL 015
 PRP-04BK 018
 PRP-04BL 018
 PRP-04CL 018
 PRP-04GN 018
 PRP-04RD 018
 PRP-04WT 018
 PRP-04YL 018
 PS-425 093
 PSRPH-10 059
 PSRPH-14 059
 PSRPH-16 059
 PTP-05 024
 PTP-08 024
 PTP-09 024
 PTP-12 024
 PTP-16 024
 PTP-20 024
 PWP-02BK 017
 PWP-02CL 017
 PWP-02OG 017
 PWP-02RD 017
 PWPC-02BK 018
 PWPC-02BL 018
 PWPC-02CB 018
 PWPC-02RB 018
 PWPC-02RD 018

PWS-32 023
 PWS-60 023
 PZB-18BL 070, 087
 PZB-18RD 070, 087
 PZB-20BL 070, 087
 PZB-20RD 070, 087

Q

QMP-18 013
 QMP-18BW 012
 QMP-18CL 012
 QMP-18CW 012
 QMP-18GN 012
 QMP-18OG 012
 QMP-18RD 012
 QMP-18WT 012
 QMP-18YL 012
 QMP-36 013
 QMP-36BW 012
 QMP-36CL 012
 QMP-36CW 012
 QMP-36GN 012
 QMP-36OG 012
 QMP-36RD 012
 QMP-36WT 012
 QMP-36YL 012
 QMP-72 013
 QMP-72BW 012
 QMP-72CL 012

ALPHA-NUMERIC INDEX

| | |
|----------|-----|
| QMP-72CW | 012 |
| QMP-72GN | 012 |
| QMP-72RD | 012 |
| QMP-72OG | 012 |
| QMP-72WT | 012 |
| QMP-72YL | 012 |
| QMP-LBW | 013 |
| QMP-LCL | 013 |
| QMP-LGN | 013 |
| QMP-LOG | 013 |
| QMP-LRD | 013 |
| QMP-LWT | 013 |
| QMP-LYL | 013 |
| QMP-MP | 013 |
| QMP-NH | 013 |
| QMP-SBW | 015 |
| QMP-SCL | 015 |
| QMP-SGN | 015 |
| QMP-SOG | 015 |
| QMP-SRD | 015 |
| QMP-SWT | 015 |
| QMP-SYL | 015 |

R

| | |
|-------|-----|
| RC-M | 028 |
| RM-15 | 080 |
| RM-20 | 080 |
| RM-30 | 080 |
| RM-40 | 080 |

| | |
|--------|-----|
| RM-60 | 080 |
| RMA-30 | 080 |
| RMA-40 | 080 |
| RMF-15 | 080 |
| RMF-25 | 080 |
| RMF-30 | 080 |
| RMF-45 | 080 |
| RMF-60 | 080 |

S

| | |
|----------|-----|
| SBR-6BK | 069 |
| SBR-6GY | 069 |
| SBR-6WT | 069 |
| SCFA-210 | 063 |
| SCFA-250 | 063 |
| SCFA-270 | 063 |
| SCFA-310 | 063 |
| SCFA-350 | 063 |
| SC-M | 028 |
| SCRA-03 | 062 |
| SCRA-05 | 063 |
| SCRA-12 | 063 |
| SCRA-24 | 063 |
| SCRA-38 | 063 |
| SCRA-58 | 063 |
| SCRA-85 | 063 |
| SCS-4 | 062 |
| SD-04 | 081 |
| SD-05 | 081 |

| | |
|-----------|-----|
| SDFC-16 | 074 |
| SDFC-24 | 074 |
| SDFC-32 | 074 |
| SDFC-BL | 073 |
| SDFC-BN | 073 |
| SDFC-CL | 073 |
| SDFC-GN | 073 |
| SDFC-OG | 073 |
| SDFC-PU | 073 |
| SDFC-RD | 073 |
| SDFC-YL | 073 |
| SDG-24BL | 076 |
| SDG-24BN | 076 |
| SDG-24CL | 076 |
| SDG-24GN | 076 |
| SDG-24OG | 076 |
| SDG-24PU | 076 |
| SDG-24RD | 076 |
| SDG-24YL | 076 |
| SDGC-24BL | 076 |
| SDGC-24BN | 076 |
| SDGC-24GN | 076 |
| SDGC-24OG | 076 |
| SDGC-24PU | 076 |
| SDGC-24RD | 076 |
| SDGC-24YL | 076 |
| SDHL-3 | 075 |
| SDHS-3 | 075 |
| SDM-24 | 075 |
| SDN-04 | 079 |

ALPHA-NUMERIC INDEX

| | |
|---------|-----|
| SDN-08 | 079 |
| SDN-12 | 079 |
| SDN-24 | 079 |
| SDN-CL | 079 |
| SDN-RD | 079 |
| SDN-YL | 079 |
| SDNW-08 | 078 |
| SDNW-12 | 078 |
| SDNW-16 | 078 |
| SDNW-24 | 078 |
| SDNW-32 | 078 |
| SDNW-CL | 078 |
| SDNW-RD | 078 |
| SDNW-YL | 078 |
| SDP-04 | 078 |
| SDP-08 | 078 |
| SDP-12 | 078 |
| SDP-24 | 078 |
| SDP-CL | 078 |
| SDP-RD | 078 |
| SDP-YL | 078 |
| SDPT-08 | 077 |
| SDPT-12 | 077 |
| SDPT-16 | 077 |
| SDPT-24 | 077 |
| SDPT-32 | 077 |
| SDPT-CL | 077 |
| SDPT-RD | 077 |
| SDPT-YL | 077 |
| SDPW-08 | 077 |

| | |
|---------|-----|
| SDPW-12 | 077 |
| SDPW-16 | 077 |
| SDPW-24 | 077 |
| SDPW-32 | 077 |
| SDPW-CL | 077 |
| SDPW-RD | 077 |
| SDPW-YL | 077 |
| SDR-12 | 074 |
| SDR-24 | 074 |
| SDR-04 | 074 |
| SDR-08 | 074 |
| SDR-BL | 073 |
| SDR-BN | 073 |
| SDR-CL | 073 |
| SDR-GN | 073 |
| SDR-OG | 073 |
| SDR-PU | 073 |
| SDR-RD | 073 |
| SDR-YL | 073 |
| SM-MBL | 090 |
| SM-MRPK | 090 |
| SM-MWB | 090 |
| SM-MWH | 090 |
| SM-MYL | 090 |
| SM-RRD | 090 |
| SM-WBK | 090 |
| SM-WTA | 090 |
| SRP-10 | 058 |
| SRP-14 | 058 |
| SRP-16 | 058 |

| | |
|---------|-----|
| SRPH-10 | 057 |
| SRPH-14 | 057 |
| SRPH-16 | 057 |
| SRPN-10 | 058 |
| SRPN-14 | 058 |
| SRPN-16 | 058 |
| SS-078 | 069 |
| SS-1012 | 069 |
| SS-14 | 069 |
| SSPH-10 | 057 |
| SSPH-14 | 057 |
| SSPH-16 | 057 |
| SSRP-10 | 058 |
| SSRP-14 | 058 |
| SSRP-16 | 058 |

T

| | |
|-----------|-----|
| TC-01 | 027 |
| TP-1220BK | 084 |
| TP-1220RD | 084 |
| TP-1220WT | 084 |
| TPD-12 | 094 |
| TPD-14 | 094 |
| TPD-14BK | 094 |
| TPD-16 | 094 |
| TS-08 | 092 |
| TS-64 | 079 |
| TS-65 | 079 |

ALPHA-NUMERIC INDEX

TS-84 079
 TS-85 079
 TUTP-9 071

U

UTP-9 071

W

WB-579BK 032
 WB-579M 032
 WBB-01 033
 WBB-KS 034
 WBC-11M 045
 WBC-11MS 045
 WBC-11N 045
 WBC-11NS 045
 WBC-11W 045
 WBC-11WS 045
 WCB-812 035
 WCB-816 035
 WCB-1218 065
 WCB-1224 065
 WCB-1520 065
 WCB-1622 065
 WCB-1824 065
 WCB-1830 065
 WCBC-115 034
 WCBF-69 034

WCBP-137 034
 WCBP-137S 034
 WCBR-7 033
 WCS-414 032
 WCS-414A 032
 WF-BK 086
 WF-M 086
 WF-WH 086
 WGR-1435 047
 WLS-12 033
 WLS-14 033
 WLS-16 033
 WMD-08 022
 WMD-10 022
 WMD-12 022
 WMDM-10BK 028
 WMDM-10M 028
 WMP-18 064
 WMP-20 064
 WMP-24 064
 WMP-30 064
 WMP-36 064
 WP-1222 065
 WP-1236 066
 WP-1424 065
 WP-1436 066
 WP-1626 065
 WP-1636 066
 WP-1832 066
 WP-2034 066

WP-3608 067
 WP-3616 067
 WP-3618 067
 WP-3622 067
 WPA-1105 035
 WPA-1205 035
 WPA-1414 067
 WPA-1505 035
 WPB-30R 061
 WPB-310 061
 WPB-315 061
 WPB-320 061
 WPB-32H 061
 WPB-330 061
 WPB-33H 061
 WPB-340 061
 WPB-40R 061
 WPB-410 061
 WPB-415 061
 WPB-420 061
 WPB-42H 061
 WPB-430 061
 WPB-43H 061
 WPB-440 061
 WPD-BK 086
 WPD-M 086
 WPD-WH 086
 WRP-BK 085
 WRP-19 064
 WRP-20 064

ALPHA-NUMERIC INDEX

| | |
|----------|-----|
| WRPG-205 | 064 |
| WRP-M | 085 |
| WS-2NSBK | 092 |
| WS-2RBK | 092 |
| WSB-100 | 037 |
| WSB-75 | 037 |
| WSB-975 | 037 |
| WS-CFBK | 092 |
| WS-CRBK | 092 |
| WS-DFBK | 092 |
| WS-HTBK | 092 |
| WS-HWBK | 092 |
| WS-ITBK | 092 |
| WS-MBK | 092 |
| WSP-BK | 085 |
| WSP-M | 085 |
| WSP-WH | 085 |
| WS-SKBK | 092 |
| WTS-30RB | 047 |
| WTS-30RM | 047 |
| WTS-32DB | 046 |
| WTS-32DM | 046 |
| WTS-32SB | 046 |
| WTS-32SM | 046 |
| WTS-38DB | 046 |
| WTS-38DM | 046 |
| WTS-38SB | 046 |
| WTS-38SM | 046 |
| WUR-120 | 094 |
| WUR-1258 | 094 |

| | |
|----------|-----|
| WUR-1259 | 094 |
| WUR-130 | 094 |
| WYC-28M | 044 |
| WYC-28MA | 044 |
| WYC-28N | 044 |
| WYC-28NA | 044 |
| WYC-28W | 044 |
| WYC-28WA | 044 |

Z

| | |
|--------|-----|
| ZZD-12 | 062 |
| ZZD-16 | 062 |
| ZZD-20 | 062 |
| ZZD-24 | 062 |
| ZZD-30 | 062 |

CHRISKO
THAILAND

Address

Chrisko Products Co., Ltd.
81/32-33 Moo. 9 Chalongkroong Road
Lumpugchi, Nongchok Bangkok 10530
Thailand

Phone +662 1800 709
Fax +662 1860 146
Email export@chrisko.com



www.chrisko.com