

# 稻

## Ina Collection

"Ina" is short for Inamuragasaki Beach in Kamakura Japan. Imagine taking a stroll along wave-battered black-sand beach, the design taken inspiration from the black sand waves that washed up the shore.

CH806-8  
8 in | 20 cm

CH806-10  
10 in | 25.5 cm

CH806-115  
11.5 in | 29 cm



CH804-6  
6 in | 15.3 cm



CH804-8  
8 in | 20 cm



CH303-3  
200 ml

CH377-35  
3.6x2.6x1.2 in  
(9.3x6.8x3 cm)



CH511-5  
5x3.25x1.2 in  
(13x8.3x3 cm)



CH511-75  
7.6x3.2x1.2 in  
(19.4x8.2x3 cm)

## Mono Collection

Plain and simple. Elegant and monochromatic.

CH434-35  
300 ml




CH811-10  
10 in | 25.5 cm

CH811-125  
12.5 in | 31.75 cm

 [www.chrisko.com](http://www.chrisko.com)

 [export@chrisko.com](mailto:export@chrisko.com)

 Address  
81/32-33, Moo 9, Chalongkroong Rd.,  
Lumpugchi, Nongchok Bangkok  
10530, Thailand



download catalog

# CHRISKO

THAILAND

Adding that modern natural stoneware look. The melamine dinnerware is just the perfect fit for displaying appetizers or entree.



Easy and light to serve, simple to clean,  
most of all break-proof durability.

# MELAMINES

# Ina Collection

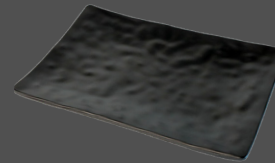
稲



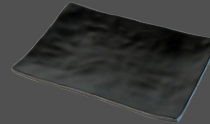
## 砂 Suna Collection

"Suna" means sand in Kanji. An inspiration from the sand waves and cool breeze at dawn in the dessert.

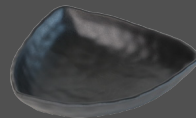
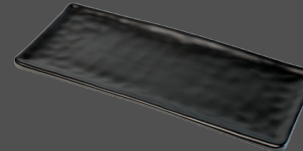
CH551-975  
9.8x6.8x1 in  
(25x17.3x2.5 cm)



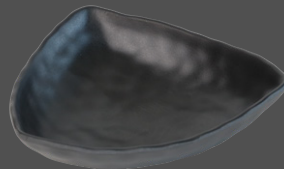
CH551-8  
7.8x5.5x3/4 in  
(20x13.8x2 cm)



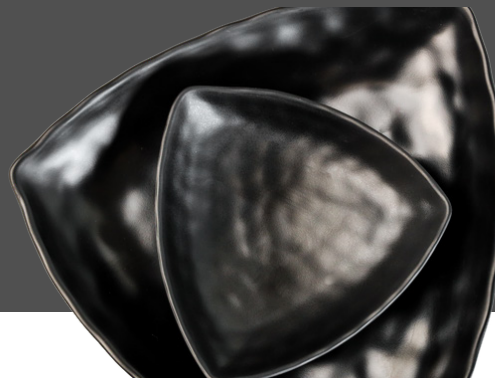
CH553-1125  
11x4.3x0.6 in  
(28.5x11x1.6 cm)



CH345-7  
7x H1.7 in  
(17.7 x H4.5 cm)



CH345-12  
12x H1.7 in  
(30 x H4.5 cm)



CH535-13  
9.4x3x3/4 in  
(24x8x2 cm)



CH535-925  
13x4x1in  
(33x10.5x2.5 cm)



CH763-105  
10.5 in | 19 cm

CH763-75  
7.5 in | 16.8 cm



CH762-5  
7.5 in | 16.8 cm

CH762-7  
7.5 in | 16.8 cm

CH762-85  
7.5 in | 16.8 cm



## 海 Umi Collection

"Umi" means ocean or sea. An inspiration from the waves of ocean that bore the shore at night.

